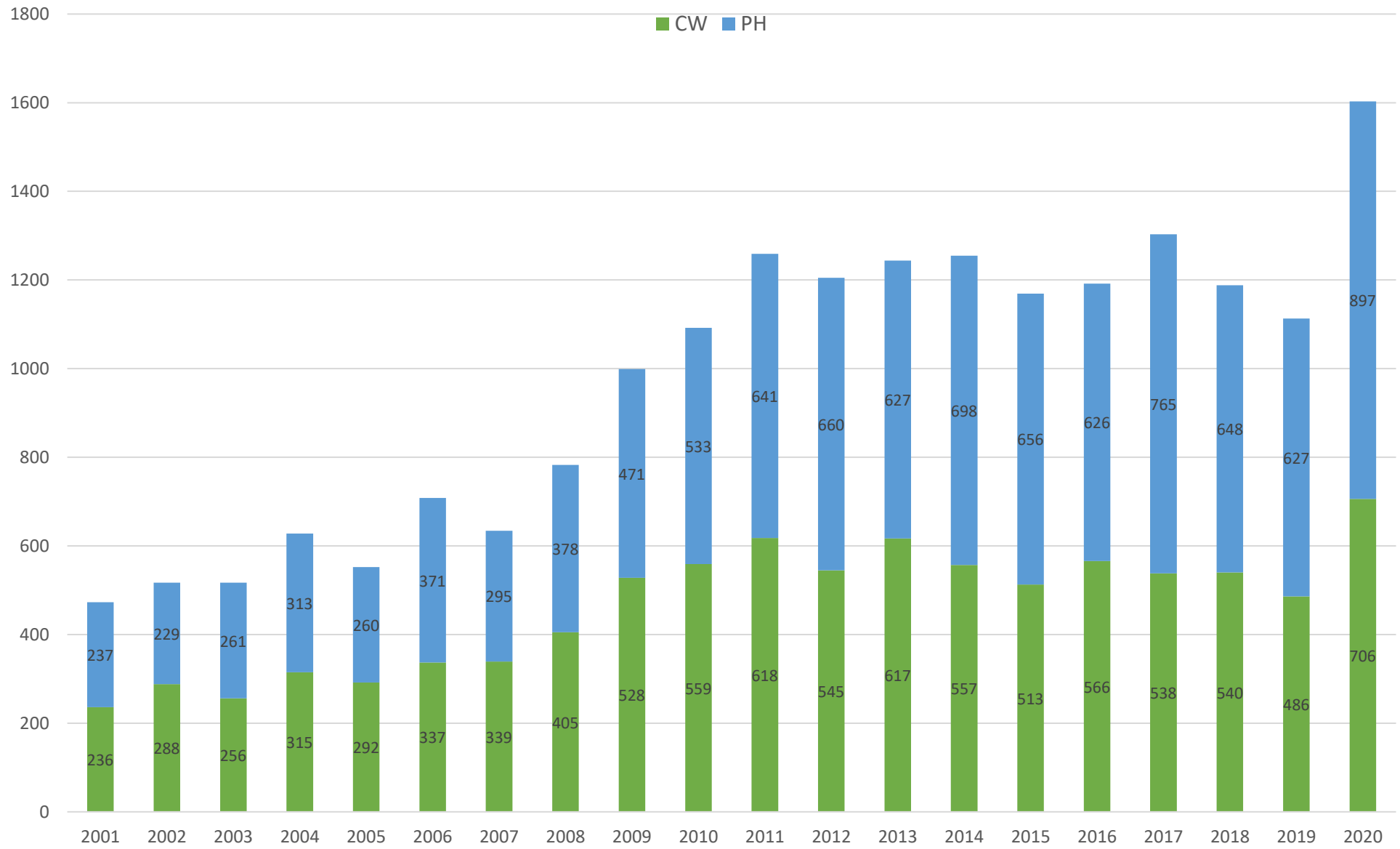
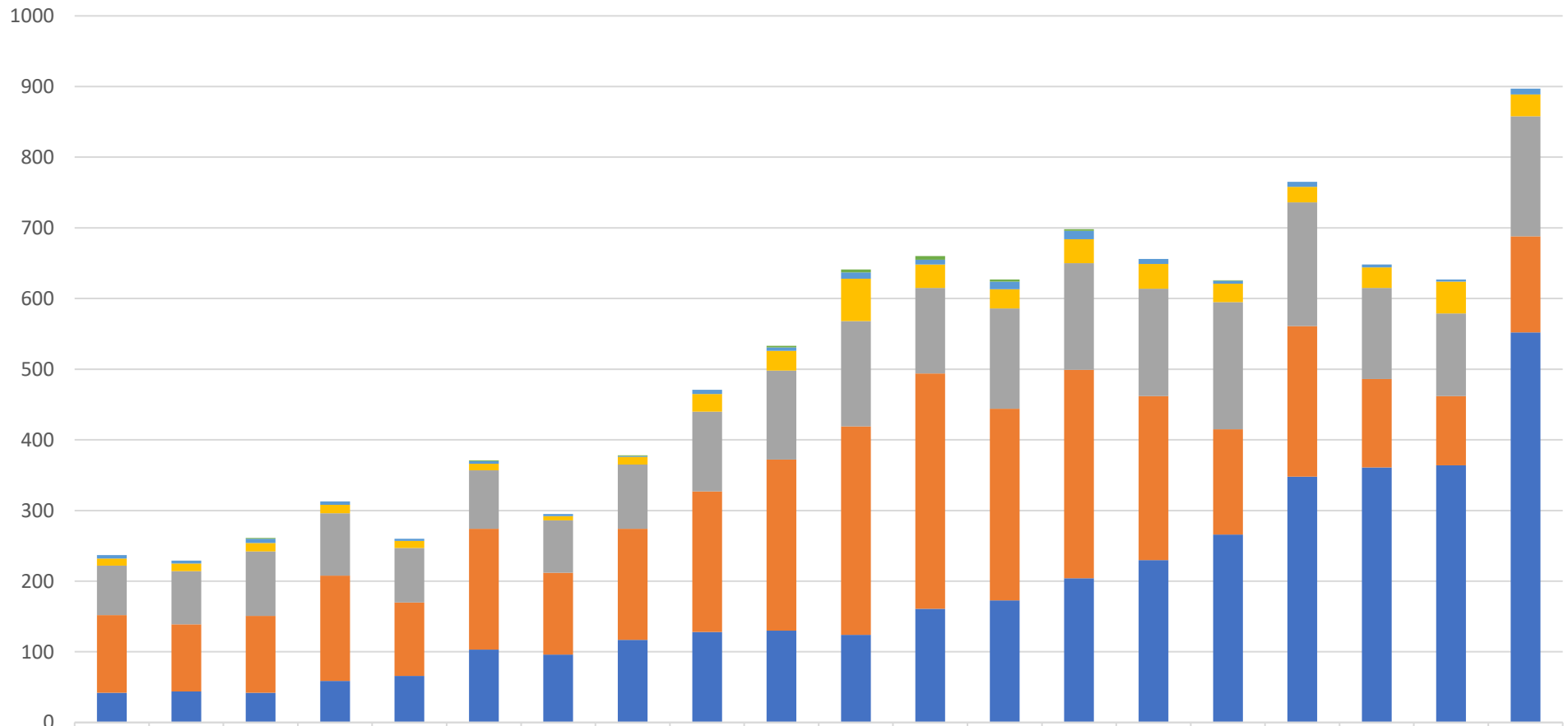


Trend in number of logs received (including check logs)

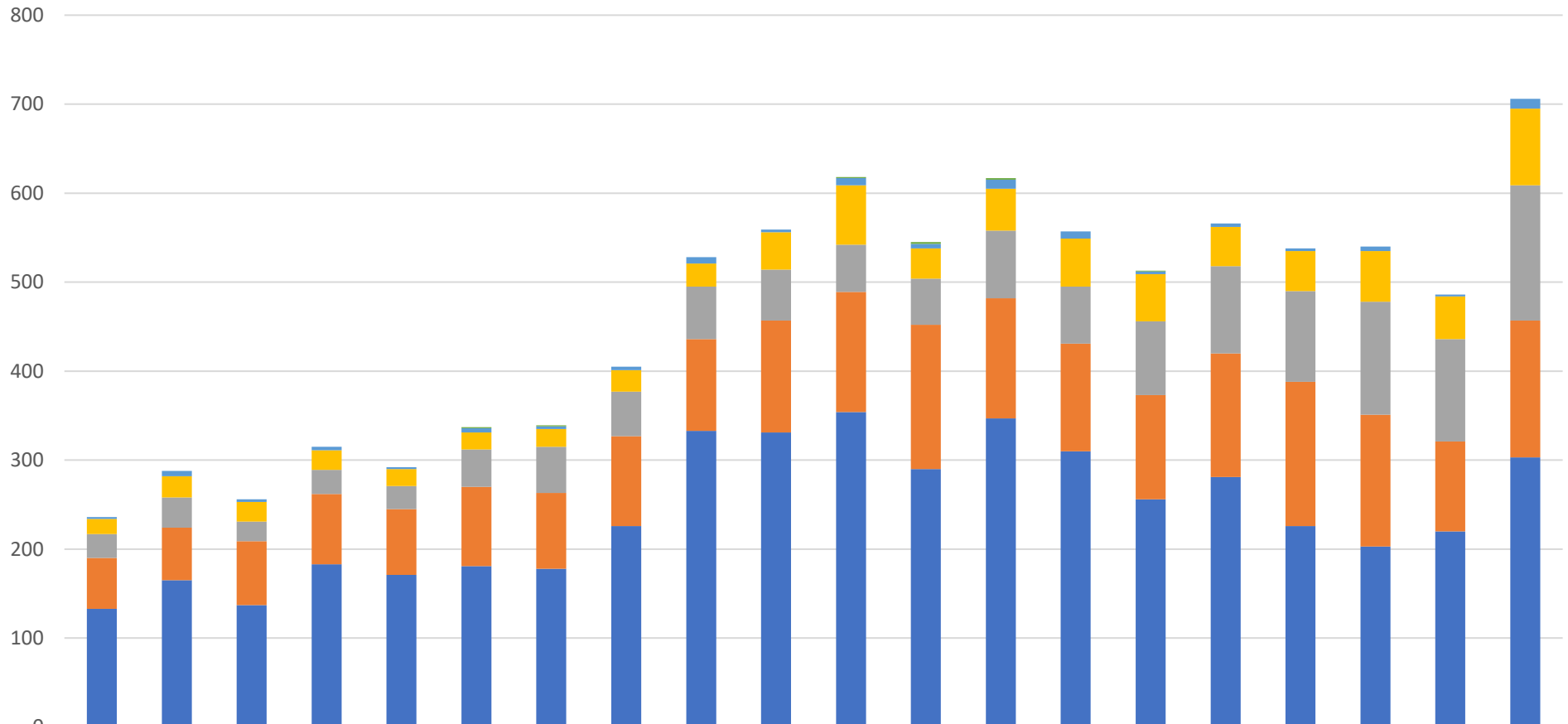


Trend in number of Phone logs received – grouped by continent



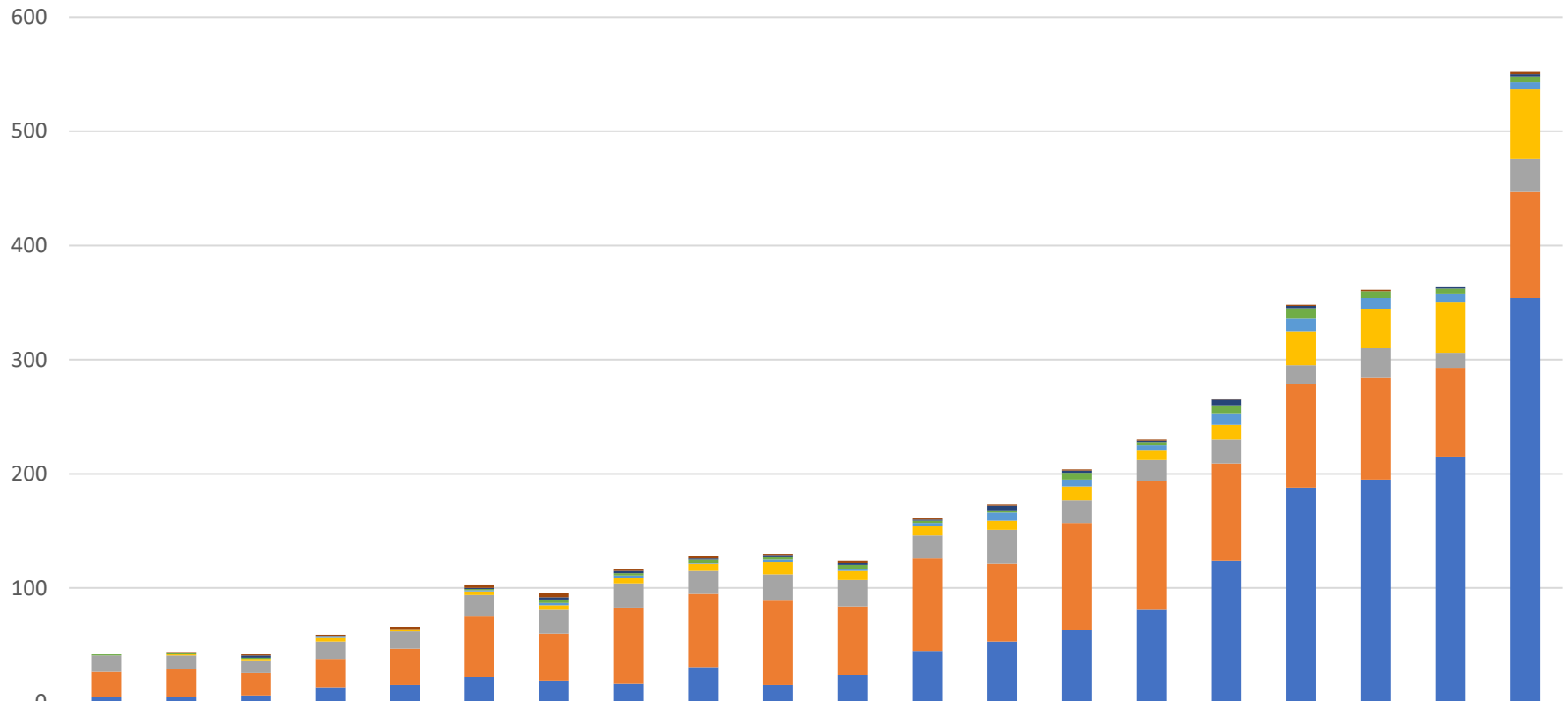
| | 2001 | 2002 | 2003 | 2004 | 2005 | 2006 | 2007 | 2008 | 2009 | 2010 | 2011 | 2012 | 2013 | 2014 | 2015 | 2016 | 2017 | 2018 | 2019 | 2020 |
|------|------|------|------|------|------|------|------|------|------|------|------|------|------|------|------|------|------|------|------|------|
| ■ AF | 0 | 0 | 1 | 0 | 0 | 1 | 0 | 1 | 0 | 2 | 4 | 5 | 3 | 2 | 0 | 1 | 0 | 0 | 0 | 0 |
| ■ SA | 5 | 4 | 6 | 5 | 3 | 4 | 3 | 1 | 6 | 5 | 9 | 7 | 11 | 12 | 7 | 4 | 7 | 4 | 3 | 8 |
| ■ NA | 10 | 11 | 12 | 12 | 10 | 9 | 6 | 11 | 25 | 28 | 60 | 33 | 27 | 34 | 35 | 26 | 22 | 29 | 45 | 31 |
| ■ AS | 70 | 75 | 91 | 88 | 77 | 83 | 74 | 91 | 113 | 126 | 149 | 121 | 142 | 151 | 152 | 180 | 175 | 129 | 117 | 170 |
| ■ EU | 110 | 95 | 109 | 149 | 104 | 171 | 116 | 157 | 199 | 242 | 295 | 333 | 271 | 295 | 232 | 149 | 213 | 125 | 98 | 136 |
| ■ OC | 42 | 44 | 42 | 59 | 66 | 103 | 96 | 117 | 128 | 130 | 124 | 161 | 173 | 204 | 230 | 266 | 348 | 361 | 364 | 552 |

Trend in number of CW logs received – grouped by continent



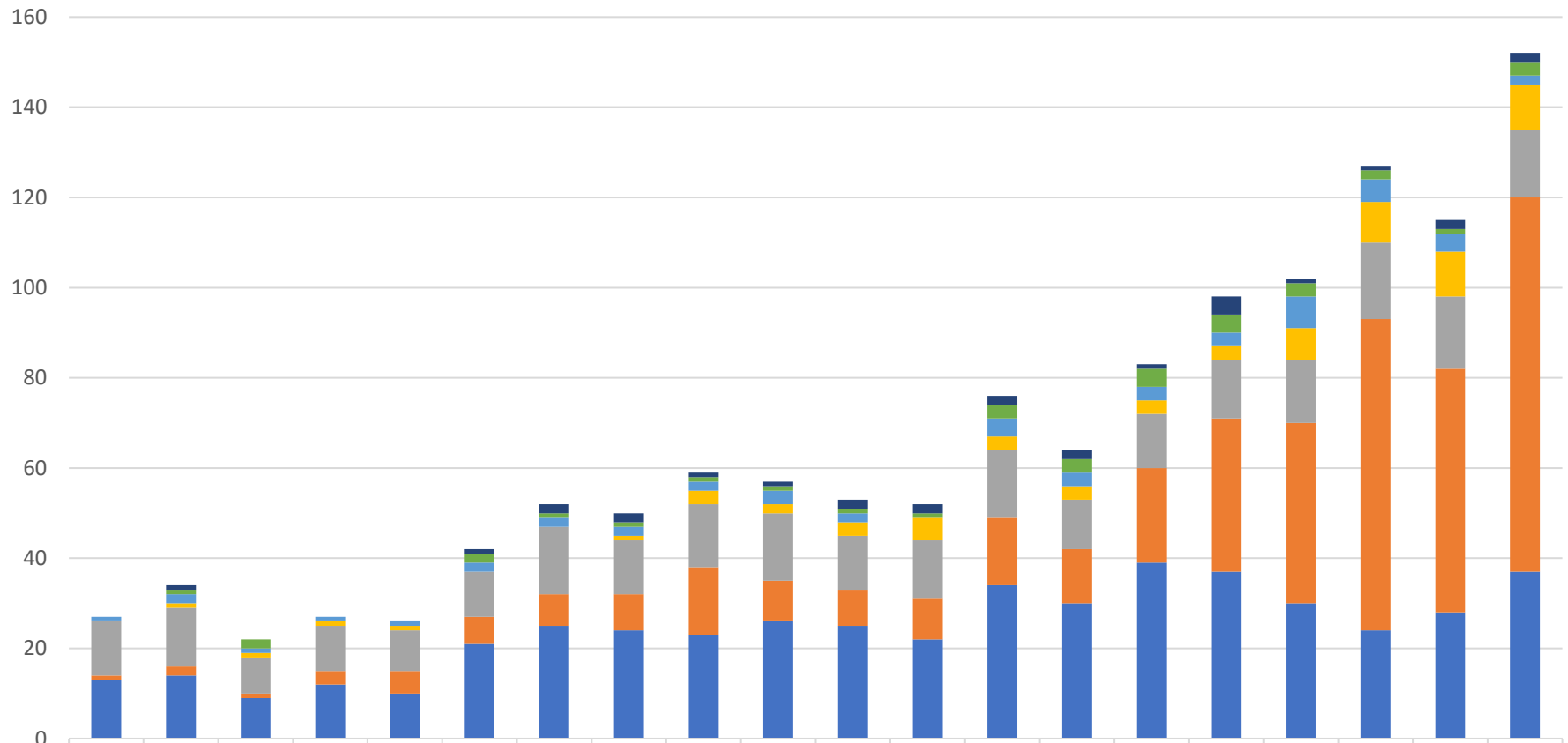
| | 2001 | 2002 | 2003 | 2004 | 2005 | 2006 | 2007 | 2008 | 2009 | 2010 | 2011 | 2012 | 2013 | 2014 | 2015 | 2016 | 2017 | 2018 | 2019 | 2020 |
|------|------|------|------|------|------|------|------|------|------|------|------|------|------|------|------|------|------|------|------|------|
| ■ AF | 0 | 0 | 0 | 0 | 0 | 1 | 1 | 0 | 0 | 0 | 1 | 2 | 2 | 0 | 1 | 0 | 0 | 0 | 0 | 0 |
| ■ SA | 2 | 6 | 3 | 4 | 2 | 5 | 3 | 4 | 7 | 3 | 8 | 5 | 10 | 8 | 3 | 4 | 3 | 5 | 2 | 11 |
| ■ NA | 17 | 24 | 22 | 22 | 19 | 19 | 20 | 24 | 26 | 42 | 67 | 34 | 47 | 54 | 53 | 44 | 45 | 57 | 48 | 86 |
| ■ OC | 27 | 34 | 22 | 27 | 26 | 42 | 52 | 50 | 59 | 57 | 53 | 52 | 76 | 64 | 83 | 98 | 102 | 127 | 115 | 152 |
| ■ AS | 57 | 59 | 72 | 79 | 74 | 89 | 85 | 101 | 103 | 126 | 135 | 162 | 135 | 121 | 117 | 139 | 162 | 148 | 101 | 154 |
| ■ EU | 133 | 165 | 137 | 183 | 171 | 181 | 178 | 226 | 333 | 331 | 354 | 290 | 347 | 310 | 256 | 281 | 226 | 203 | 220 | 303 |

Trend in number of Phone logs received from Oceania – grouped by country



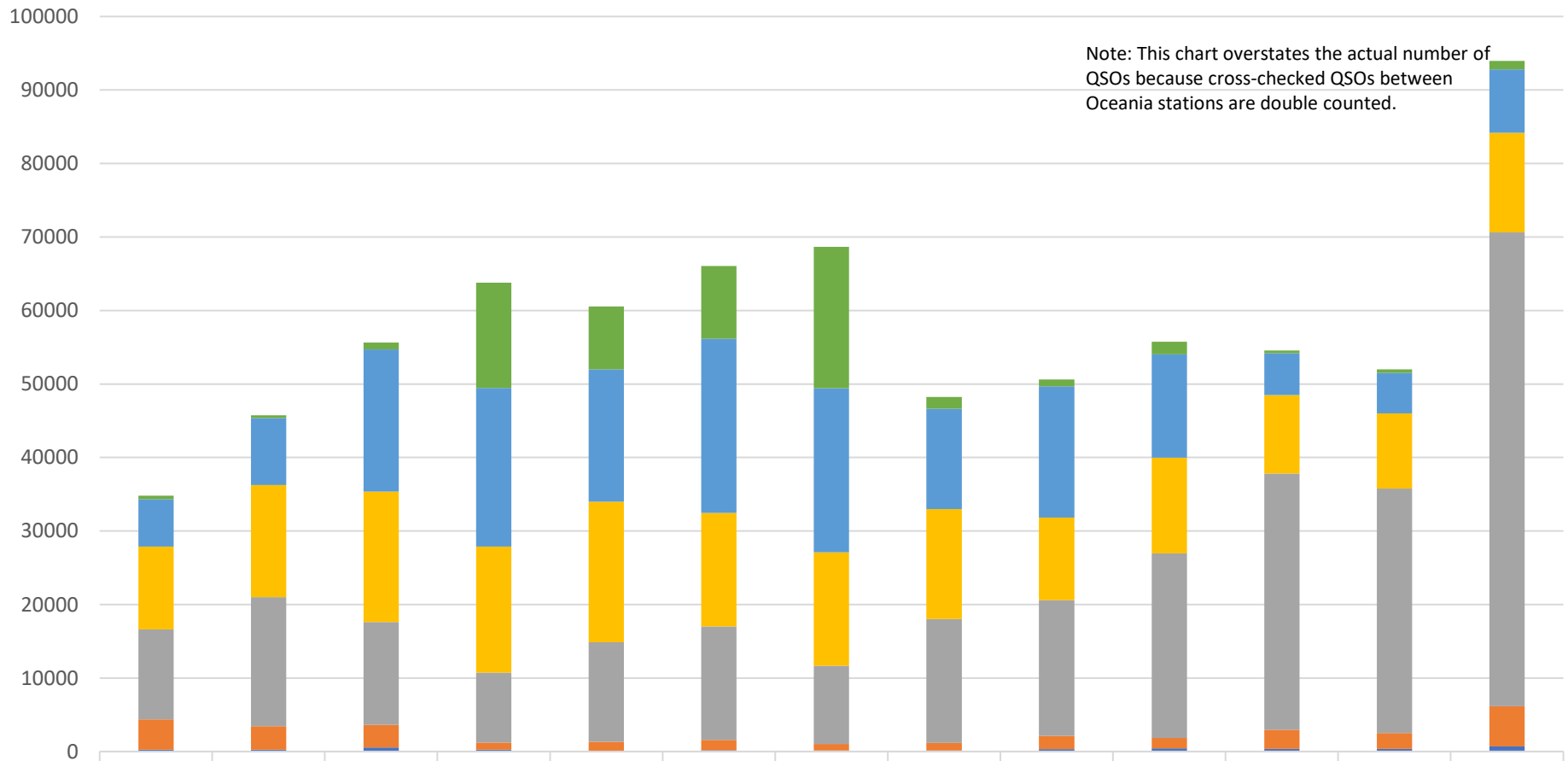
| | 2001 | 2002 | 2003 | 2004 | 2005 | 2006 | 2007 | 2008 | 2009 | 2010 | 2011 | 2012 | 2013 | 2014 | 2015 | 2016 | 2017 | 2018 | 2019 | 2020 |
|---------------|------|------|------|------|------|------|------|------|------|------|------|------|------|------|------|------|------|------|------|------|
| Guam | 0 | 1 | 1 | 1 | 2 | 3 | 4 | 2 | 2 | 1 | 2 | 1 | 1 | 1 | 1 | 1 | 1 | 1 | 0 | 2 |
| Hawaii | 0 | 0 | 2 | 0 | 0 | 1 | 2 | 2 | 1 | 2 | 2 | 1 | 4 | 2 | 1 | 5 | 2 | 0 | 2 | 2 |
| Other | 1 | 1 | 1 | 0 | 0 | 1 | 3 | 2 | 3 | 2 | 3 | 2 | 2 | 6 | 3 | 7 | 9 | 6 | 4 | 5 |
| East Malaysia | 0 | 0 | 0 | 1 | 0 | 1 | 2 | 2 | 1 | 2 | 2 | 3 | 7 | 6 | 4 | 10 | 11 | 10 | 8 | 6 |
| Philippines | 0 | 1 | 2 | 4 | 2 | 3 | 4 | 5 | 6 | 11 | 8 | 8 | 8 | 12 | 9 | 13 | 30 | 34 | 44 | 61 |
| New Zealand | 14 | 12 | 10 | 15 | 15 | 19 | 21 | 21 | 20 | 23 | 23 | 20 | 30 | 20 | 18 | 21 | 16 | 26 | 13 | 29 |
| Australia | 22 | 24 | 20 | 25 | 32 | 53 | 41 | 67 | 65 | 74 | 60 | 81 | 68 | 94 | 113 | 85 | 91 | 89 | 78 | 93 |
| Indonesia | 5 | 5 | 6 | 13 | 15 | 22 | 19 | 16 | 30 | 15 | 24 | 45 | 53 | 63 | 81 | 124 | 188 | 195 | 215 | 354 |

Trend in number of CW logs received from Oceania – grouped by country



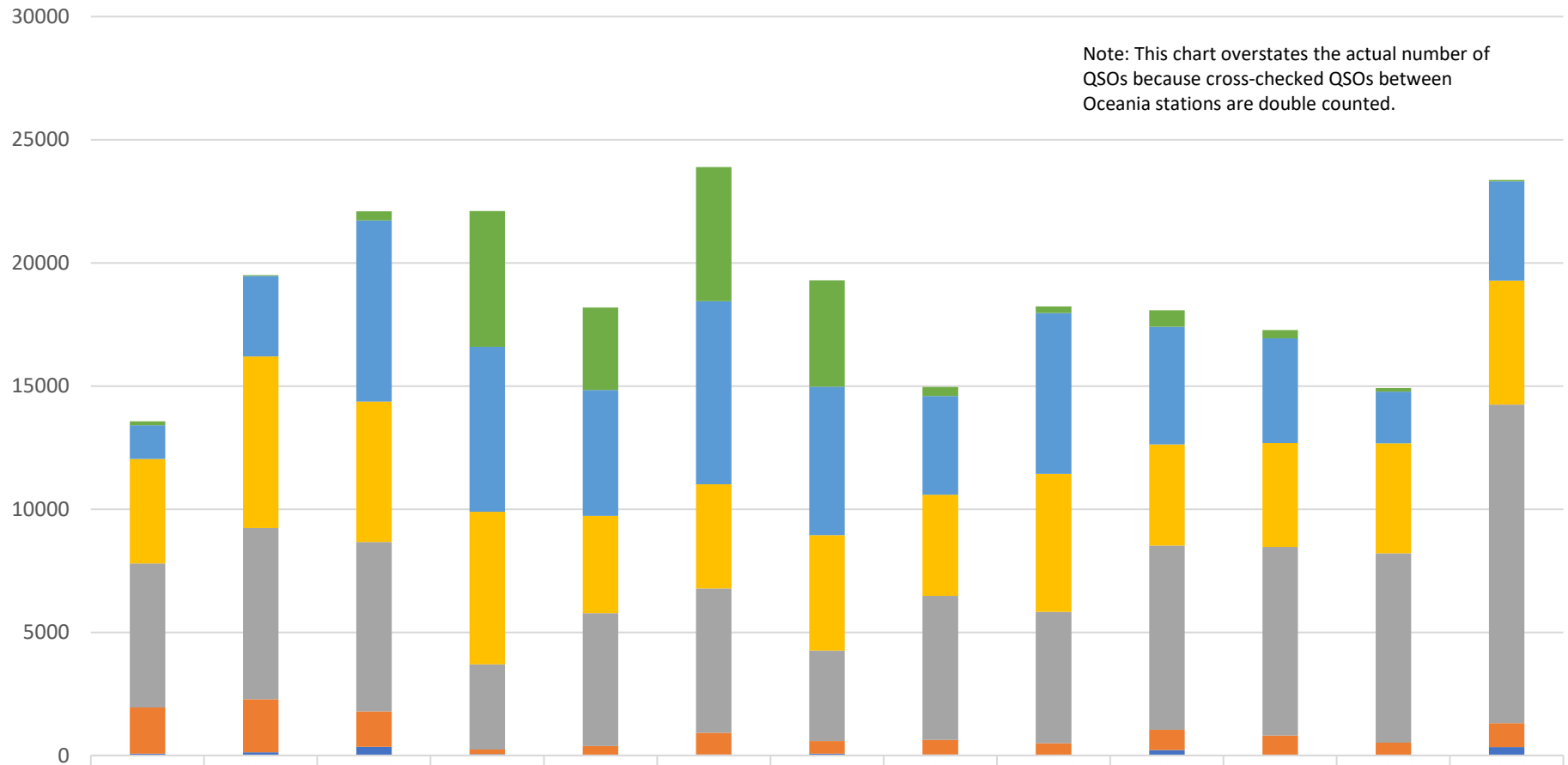
| | 2001 | 2002 | 2003 | 2004 | 2005 | 2006 | 2007 | 2008 | 2009 | 2010 | 2011 | 2012 | 2013 | 2014 | 2015 | 2016 | 2017 | 2018 | 2019 | 2020 |
|---------------|------|------|------|------|------|------|------|------|------|------|------|------|------|------|------|------|------|------|------|------|
| East Malaysia | 0 | 1 | 0 | 0 | 0 | 1 | 2 | 2 | 1 | 1 | 2 | 2 | 2 | 2 | 1 | 4 | 1 | 1 | 2 | 2 |
| Hawaii | 0 | 1 | 2 | 0 | 0 | 2 | 1 | 1 | 1 | 1 | 1 | 1 | 3 | 3 | 4 | 4 | 3 | 2 | 1 | 3 |
| Other | 1 | 2 | 1 | 1 | 1 | 2 | 2 | 2 | 2 | 3 | 2 | 0 | 4 | 3 | 3 | 3 | 7 | 5 | 4 | 2 |
| Philippines | 0 | 1 | 1 | 1 | 1 | 0 | 0 | 1 | 3 | 2 | 3 | 5 | 3 | 3 | 3 | 3 | 7 | 9 | 10 | 10 |
| New Zealand | 12 | 13 | 8 | 10 | 9 | 10 | 15 | 12 | 14 | 15 | 12 | 13 | 15 | 11 | 12 | 13 | 14 | 17 | 16 | 15 |
| Indonesia | 1 | 2 | 1 | 3 | 5 | 6 | 7 | 8 | 15 | 9 | 8 | 9 | 15 | 12 | 21 | 34 | 40 | 69 | 54 | 83 |
| Australia | 13 | 14 | 9 | 12 | 10 | 21 | 25 | 24 | 23 | 26 | 25 | 22 | 34 | 30 | 39 | 37 | 30 | 24 | 28 | 37 |

Trend in number of Phone QSOs logged by Oceania stations – grouped by band



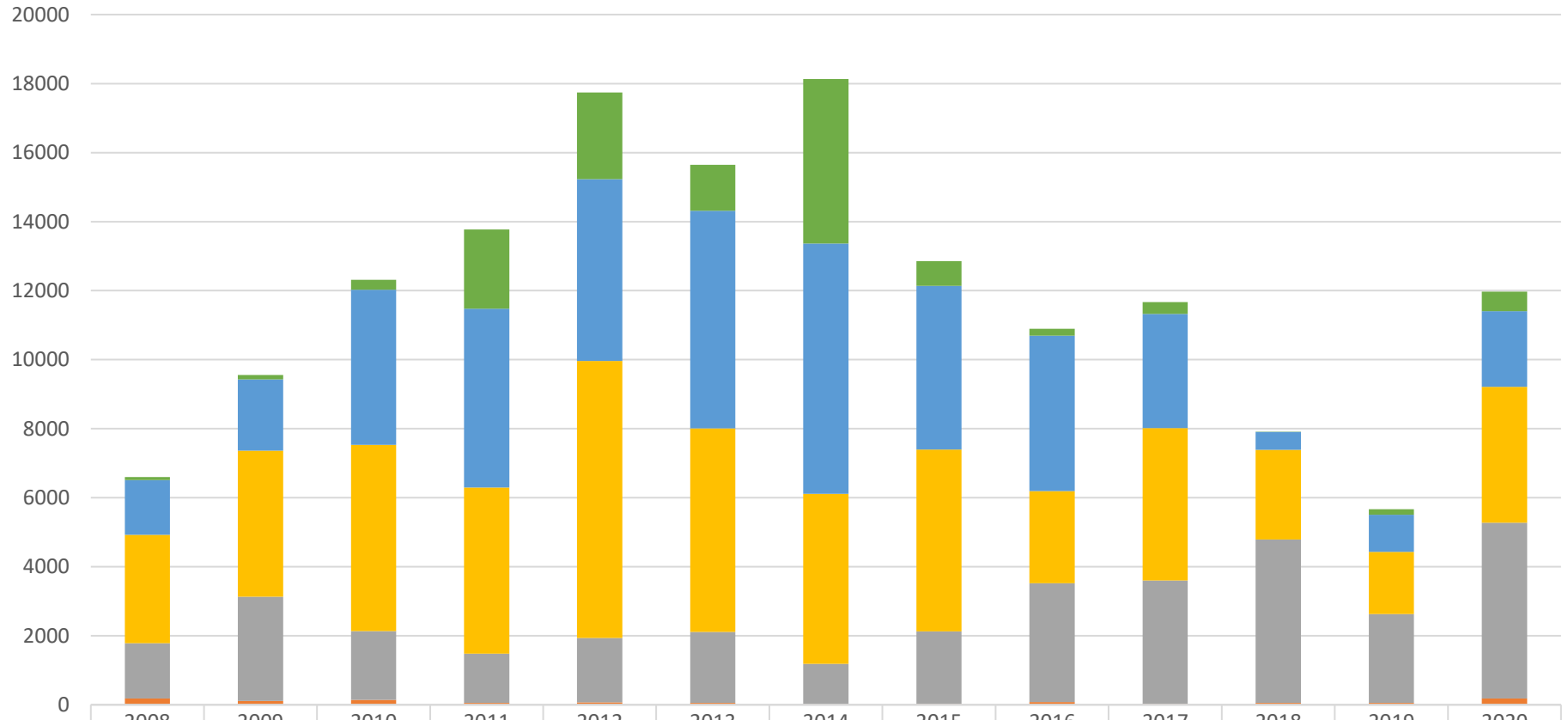
| | 2008 | 2009 | 2010 | 2011 | 2012 | 2013 | 2014 | 2015 | 2016 | 2017 | 2018 | 2019 | 2020 |
|-------------|-------|-------|-------|-------|-------|-------|-------|-------|-------|-------|-------|-------|-------|
| ■ 10M QSOs | 509 | 368 | 929 | 14325 | 8570 | 9895 | 19226 | 1596 | 925 | 1706 | 373 | 470 | 1176 |
| ■ 15M QSOs | 6419 | 9116 | 19334 | 21574 | 18012 | 23694 | 22340 | 13673 | 17854 | 14067 | 5694 | 5518 | 8606 |
| ■ 20M QSOs | 11271 | 15225 | 17749 | 17143 | 19138 | 15448 | 15429 | 14937 | 11257 | 13019 | 10680 | 10219 | 13559 |
| ■ 40M QSOs | 12259 | 17568 | 14008 | 9516 | 13530 | 15433 | 10627 | 16851 | 18449 | 25123 | 34867 | 33274 | 64479 |
| ■ 80M QSOs | 4110 | 3192 | 3075 | 963 | 1263 | 1416 | 885 | 1057 | 1833 | 1426 | 2608 | 2160 | 5465 |
| ■ 160M QSOs | 255 | 264 | 543 | 258 | 58 | 164 | 153 | 128 | 307 | 420 | 356 | 350 | 689 |

Trend in number of CW QSOs logged by Oceania stations – grouped by band



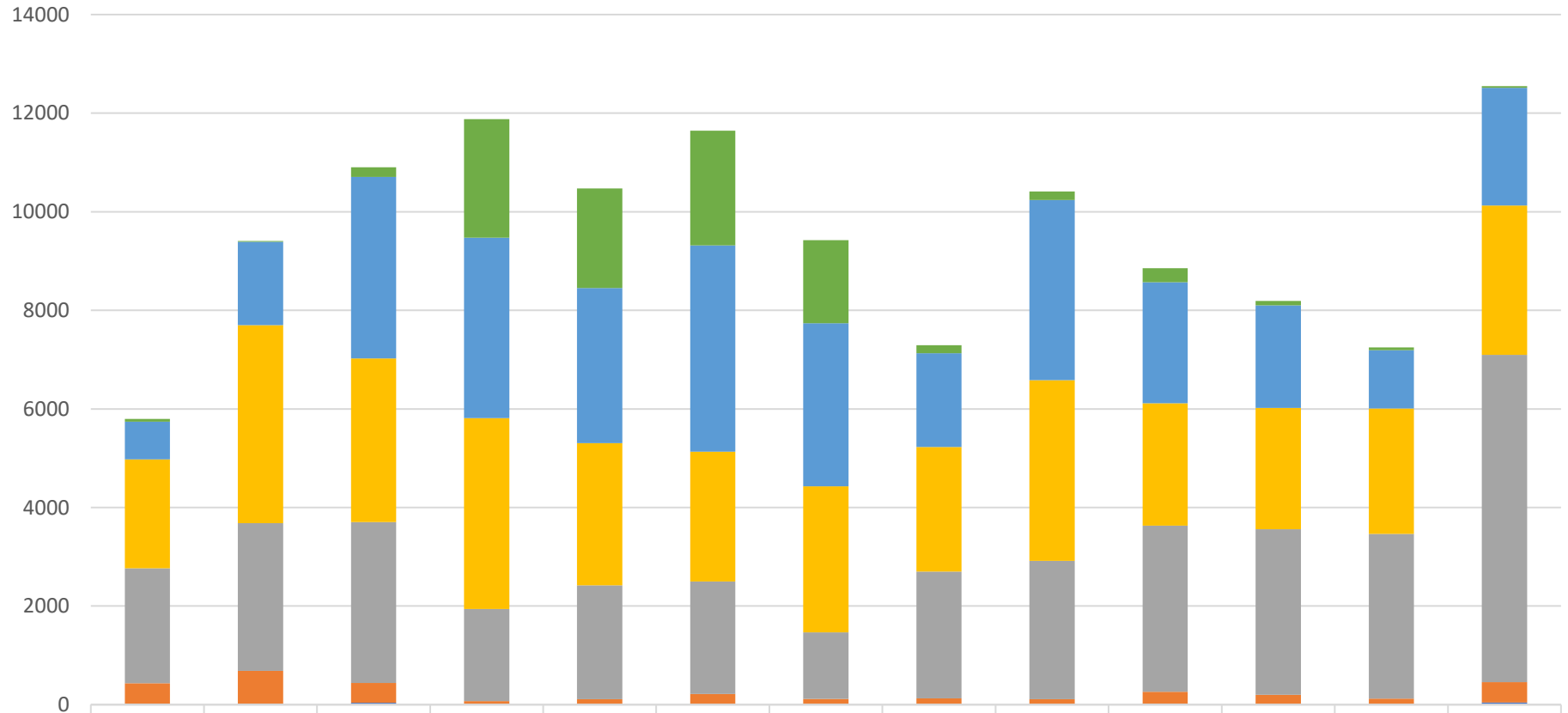
| | 2008 | 2009 | 2010 | 2011 | 2012 | 2013 | 2014 | 2015 | 2016 | 2017 | 2018 | 2019 | 2020 |
|-------------|------|------|------|------|------|------|------|------|------|------|------|------|-------|
| ■ 10M QSOs | 153 | 37 | 371 | 5514 | 3350 | 5441 | 4328 | 360 | 272 | 664 | 337 | 147 | 57 |
| ■ 15M QSOs | 1379 | 3272 | 7353 | 6691 | 5107 | 7437 | 6021 | 4011 | 6529 | 4774 | 4254 | 2101 | 4035 |
| ■ 20M QSOs | 4242 | 6958 | 5707 | 6198 | 3945 | 4235 | 4687 | 4109 | 5601 | 4109 | 4216 | 4464 | 5023 |
| ■ 40M QSOs | 5846 | 6954 | 6878 | 3458 | 5396 | 5854 | 3671 | 5847 | 5333 | 7479 | 7656 | 7691 | 12936 |
| ■ 80M QSOs | 1875 | 2160 | 1432 | 185 | 367 | 887 | 514 | 596 | 475 | 828 | 803 | 487 | 978 |
| ■ 160M QSOs | 75 | 127 | 358 | 57 | 20 | 36 | 76 | 36 | 25 | 218 | 11 | 32 | 340 |

Trend in number of Phone QSOs logged by non-Oceania stations – grouped by band



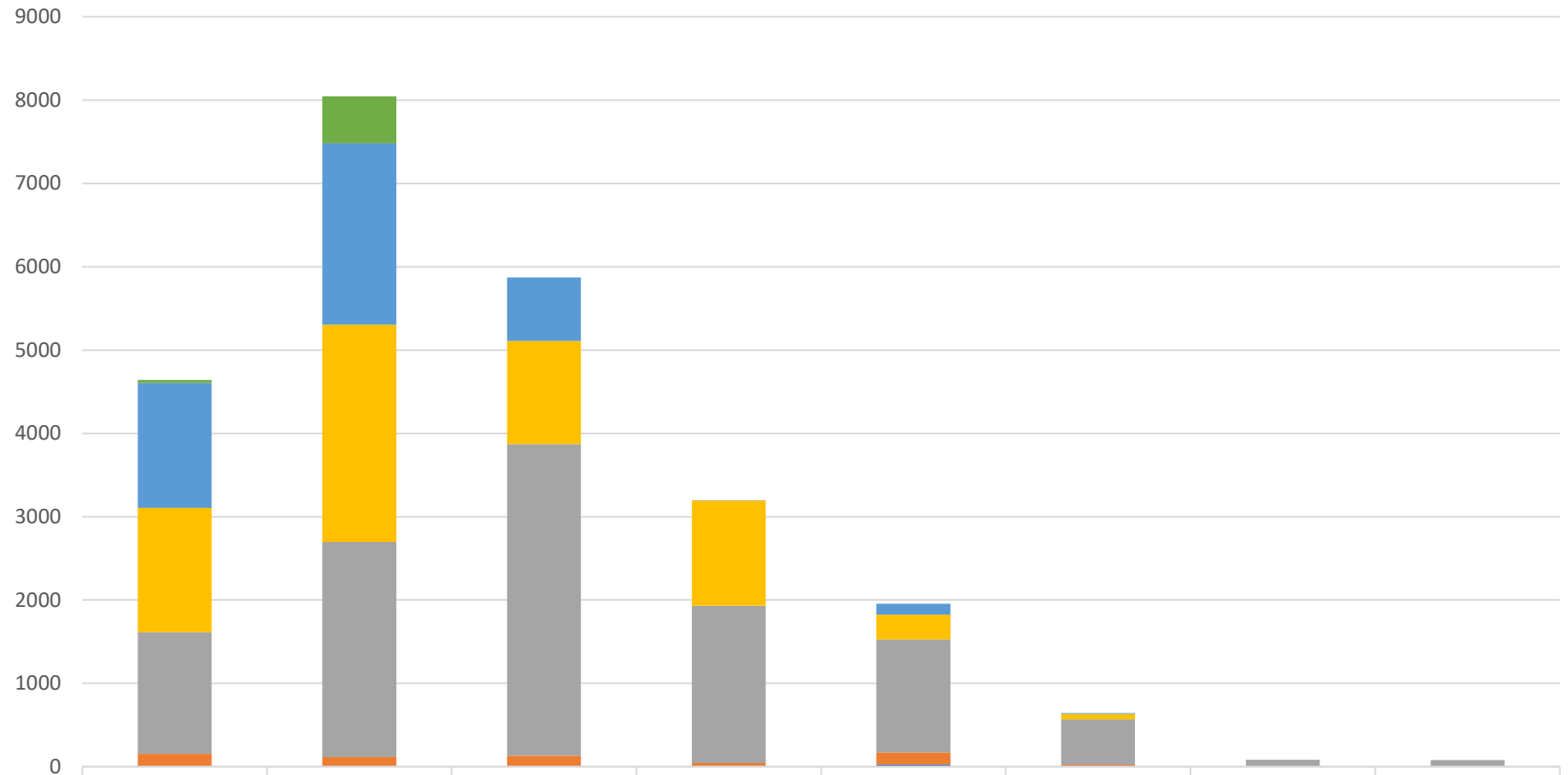
| | 2008 | 2009 | 2010 | 2011 | 2012 | 2013 | 2014 | 2015 | 2016 | 2017 | 2018 | 2019 | 2020 |
|-------------|------|------|------|------|------|------|------|------|------|------|------|------|------|
| ■ 10M QSOs | 92 | 128 | 287 | 2297 | 2511 | 1337 | 4767 | 716 | 195 | 342 | 4 | 161 | 566 |
| ■ 15M QSOs | 1581 | 2064 | 4494 | 5180 | 5268 | 6300 | 7253 | 4744 | 4503 | 3310 | 521 | 1073 | 2192 |
| ■ 20M QSOs | 3141 | 4230 | 5399 | 4815 | 8023 | 5901 | 4923 | 5270 | 2669 | 4414 | 2595 | 1802 | 3934 |
| ■ 40M QSOs | 1607 | 3019 | 1990 | 1426 | 1868 | 2052 | 1174 | 2102 | 3448 | 3582 | 4733 | 2578 | 5096 |
| ■ 80M QSOs | 179 | 113 | 143 | 49 | 72 | 56 | 17 | 27 | 76 | 20 | 55 | 54 | 179 |
| ■ 160M QSOs | 0 | 1 | 0 | 7 | 0 | 3 | 0 | 0 | 1 | 0 | 4 | 0 | 3 |

Trend in number of CW QSOs logged by non-Oceania stations – grouped by band



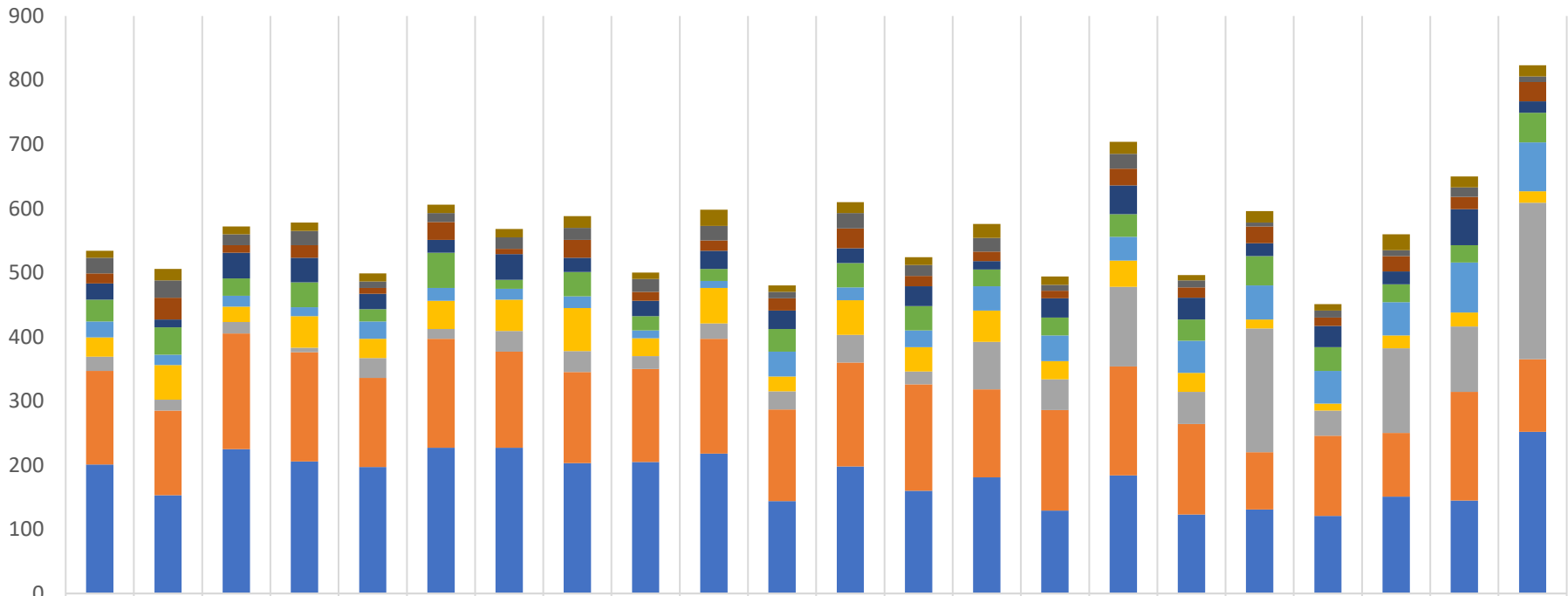
| | 2008 | 2009 | 2010 | 2011 | 2012 | 2013 | 2014 | 2015 | 2016 | 2017 | 2018 | 2019 | 2020 |
|-----------|------|------|------|------|------|------|------|------|------|------|------|------|------|
| 10M QSOs | 57 | 13 | 193 | 2405 | 2019 | 2330 | 1685 | 161 | 177 | 283 | 90 | 58 | 34 |
| 15M QSOs | 764 | 1694 | 3684 | 3660 | 3147 | 4182 | 3309 | 1902 | 3654 | 2457 | 2081 | 1181 | 2391 |
| 20M QSOs | 2212 | 4018 | 3321 | 3872 | 2881 | 2636 | 2962 | 2532 | 3662 | 2479 | 2464 | 2544 | 3030 |
| 40M QSOs | 2332 | 2994 | 3261 | 1873 | 2309 | 2279 | 1348 | 2568 | 2806 | 3374 | 3358 | 3345 | 6637 |
| 80M QSOs | 420 | 669 | 406 | 57 | 113 | 212 | 112 | 122 | 109 | 243 | 198 | 116 | 413 |
| 160M QSOs | 14 | 17 | 37 | 13 | 1 | 7 | 7 | 8 | 5 | 17 | 2 | 4 | 45 |

QSOs logged by non-Oceania stations in 2020 - grouped by continent and band



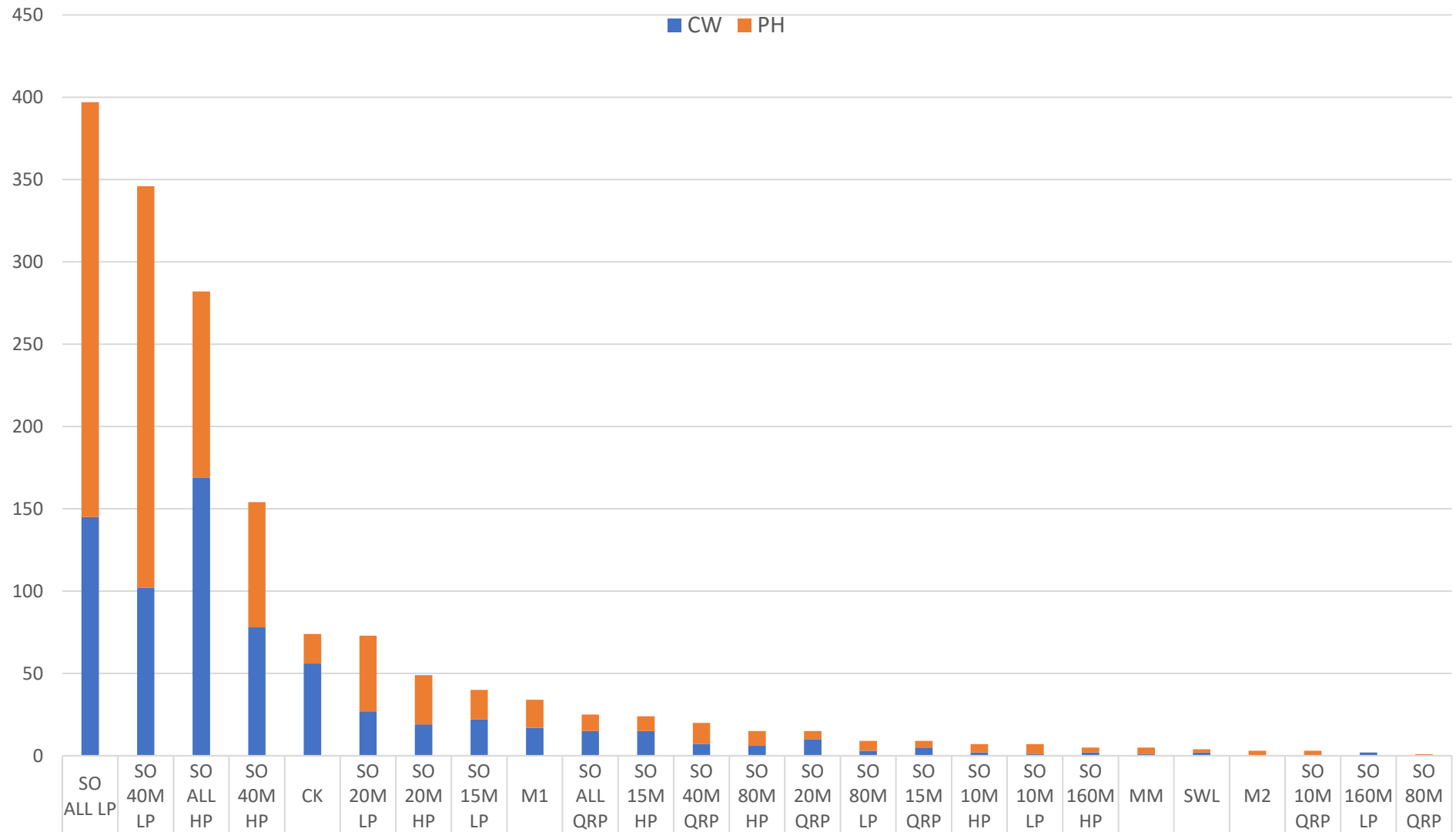
| | Asia CW | Asia PH | Europe CW | Europe PH | North America CW | North America PH | South America CW | South America PH |
|-----------|---------|---------|-----------|-----------|------------------|------------------|------------------|------------------|
| 10M QSOs | 34 | 566 | 0 | 0 | 0 | 0 | 0 | 0 |
| 15M QSOs | 1501 | 2178 | 758 | 4 | 132 | 10 | 0 | 0 |
| 20M QSOs | 1491 | 2607 | 1242 | 1261 | 297 | 66 | 0 | 0 |
| 40M QSOs | 1461 | 2581 | 3739 | 1889 | 1353 | 545 | 84 | 81 |
| 80M QSOs | 143 | 115 | 125 | 44 | 145 | 20 | 0 | 0 |
| 160M QSOs | 11 | 0 | 6 | 0 | 28 | 3 | 0 | 0 |

Trend in number of logs received for top 10 entry categories



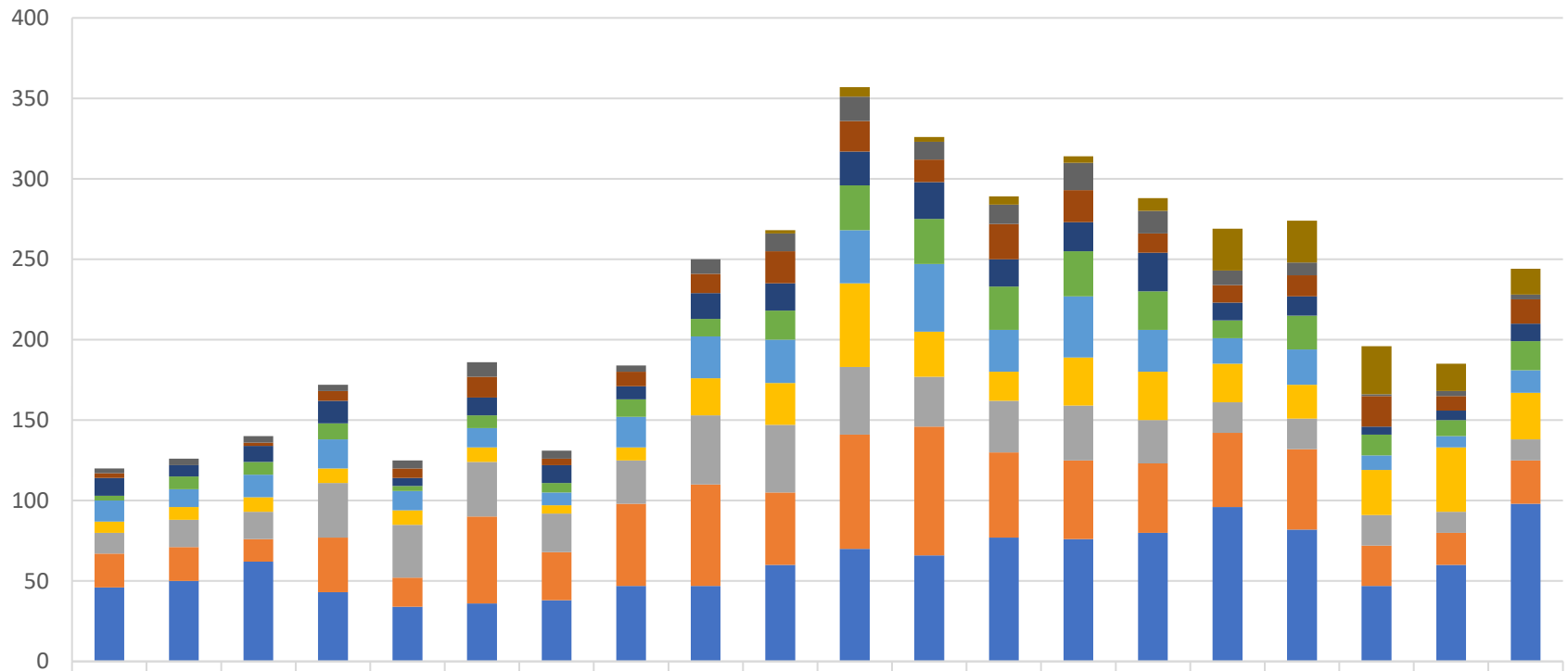
| | 2010 CW | 2010 PH | 2011 CW | 2011 PH | 2012 CW | 2012 PH | 2013 CW | 2013 PH | 2014 CW | 2014 PH | 2015 CW | 2015 PH | 2016 CW | 2016 PH | 2017 CW | 2017 PH | 2018 CW | 2018 PH | 2019 CW | 2019 PH | 2020 CW | 2020 PH |
|-------------|---------|---------|---------|---------|---------|---------|---------|---------|---------|---------|---------|---------|---------|---------|---------|---------|---------|---------|---------|---------|---------|---------|
| ■ M1 | 11 | 18 | 12 | 13 | 13 | 13 | 13 | 18 | 10 | 25 | 10 | 17 | 12 | 22 | 13 | 19 | 8 | 18 | 10 | 25 | 17 | 17 |
| ■ SO 15M HP | 24 | 27 | 17 | 22 | 10 | 14 | 18 | 19 | 20 | 23 | 10 | 24 | 17 | 21 | 9 | 23 | 11 | 6 | 11 | 9 | 15 | 9 |
| ■ SO 20M HP | 16 | 34 | 12 | 20 | 9 | 28 | 8 | 28 | 14 | 16 | 19 | 31 | 16 | 15 | 12 | 26 | 16 | 26 | 13 | 24 | 19 | 30 |
| ■ CK | 25 | 12 | 40 | 38 | 24 | 20 | 40 | 22 | 24 | 28 | 29 | 23 | 31 | 13 | 30 | 45 | 34 | 20 | 33 | 20 | 56 | 18 |
| ■ SO 20M LP | 34 | 43 | 27 | 39 | 19 | 55 | 14 | 38 | 22 | 19 | 35 | 38 | 38 | 26 | 28 | 35 | 33 | 46 | 37 | 28 | 27 | 46 |
| ■ SO 40M HP | 25 | 16 | 17 | 14 | 27 | 20 | 17 | 18 | 12 | 11 | 39 | 20 | 26 | 38 | 40 | 37 | 50 | 53 | 51 | 52 | 78 | 76 |
| ■ SO 15M LP | 30 | 54 | 24 | 49 | 30 | 44 | 49 | 67 | 28 | 55 | 23 | 54 | 38 | 49 | 28 | 41 | 30 | 14 | 11 | 20 | 22 | 18 |
| ■ SO 40M LP | 22 | 17 | 18 | 7 | 31 | 15 | 32 | 33 | 20 | 24 | 28 | 43 | 20 | 74 | 48 | 124 | 50 | 193 | 39 | 132 | 102 | 244 |
| ■ SO ALL HP | 146 | 132 | 180 | 170 | 139 | 170 | 150 | 142 | 145 | 179 | 143 | 162 | 166 | 137 | 157 | 170 | 141 | 89 | 125 | 99 | 169 | 113 |
| ■ SO ALL LP | 201 | 153 | 225 | 206 | 197 | 227 | 227 | 203 | 205 | 218 | 144 | 198 | 160 | 181 | 129 | 184 | 123 | 131 | 121 | 151 | 145 | 252 |

Number of logs received in 2020 – grouped by category



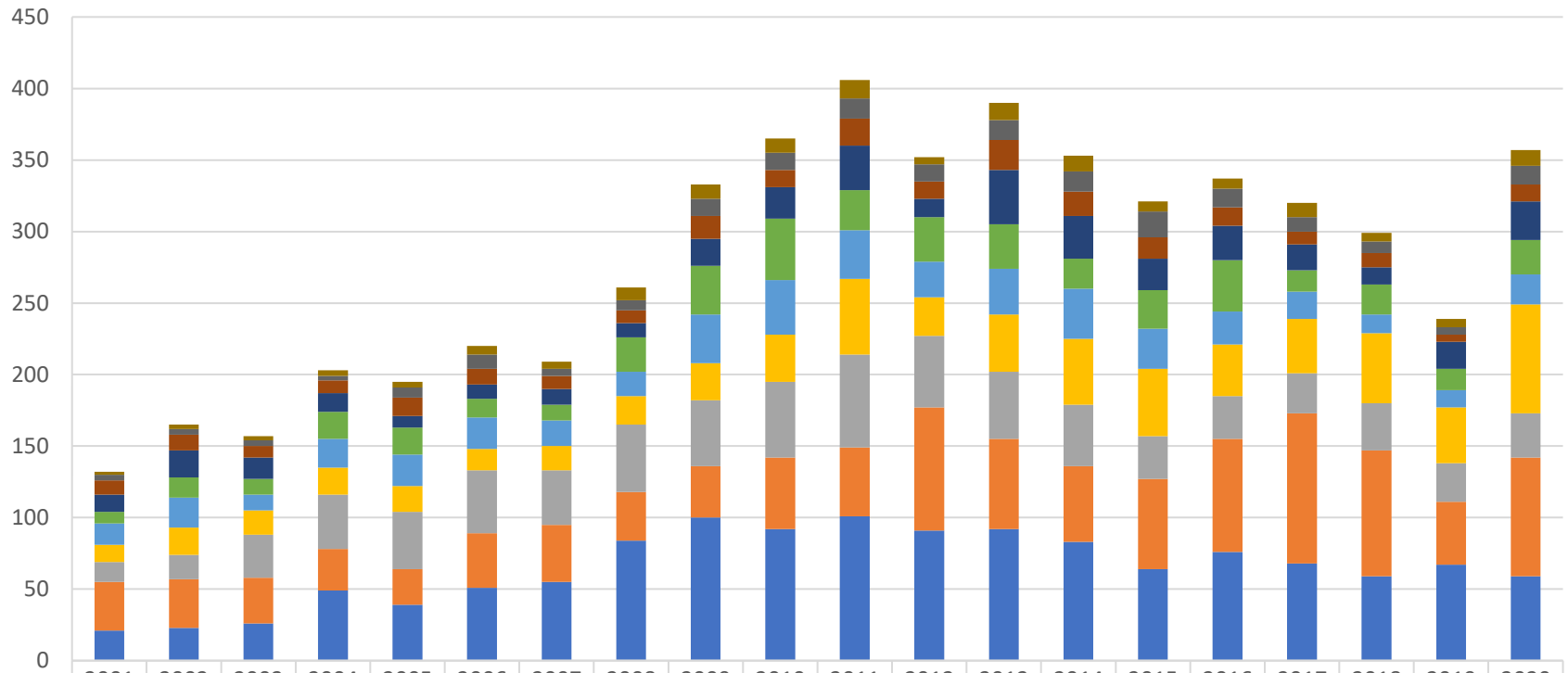
| | | | | | | | | | | | | | | | | | | | | | | | | | |
|----|-----|-----|-----|----|----|----|----|----|----|----|----|----|---|----|---|---|---|---|---|---|---|---|---|---|---|
| PH | 252 | 244 | 113 | 76 | 18 | 46 | 30 | 18 | 17 | 10 | 9 | 13 | 9 | 5 | 6 | 4 | 5 | 6 | 3 | 4 | 2 | 3 | 3 | 0 | 1 |
| CW | 145 | 102 | 169 | 78 | 56 | 27 | 19 | 22 | 17 | 15 | 15 | 7 | 6 | 10 | 3 | 5 | 2 | 1 | 2 | 1 | 2 | 0 | 0 | 2 | 0 |

Trend in number of Phone logs from top 10 countries outside Oceania



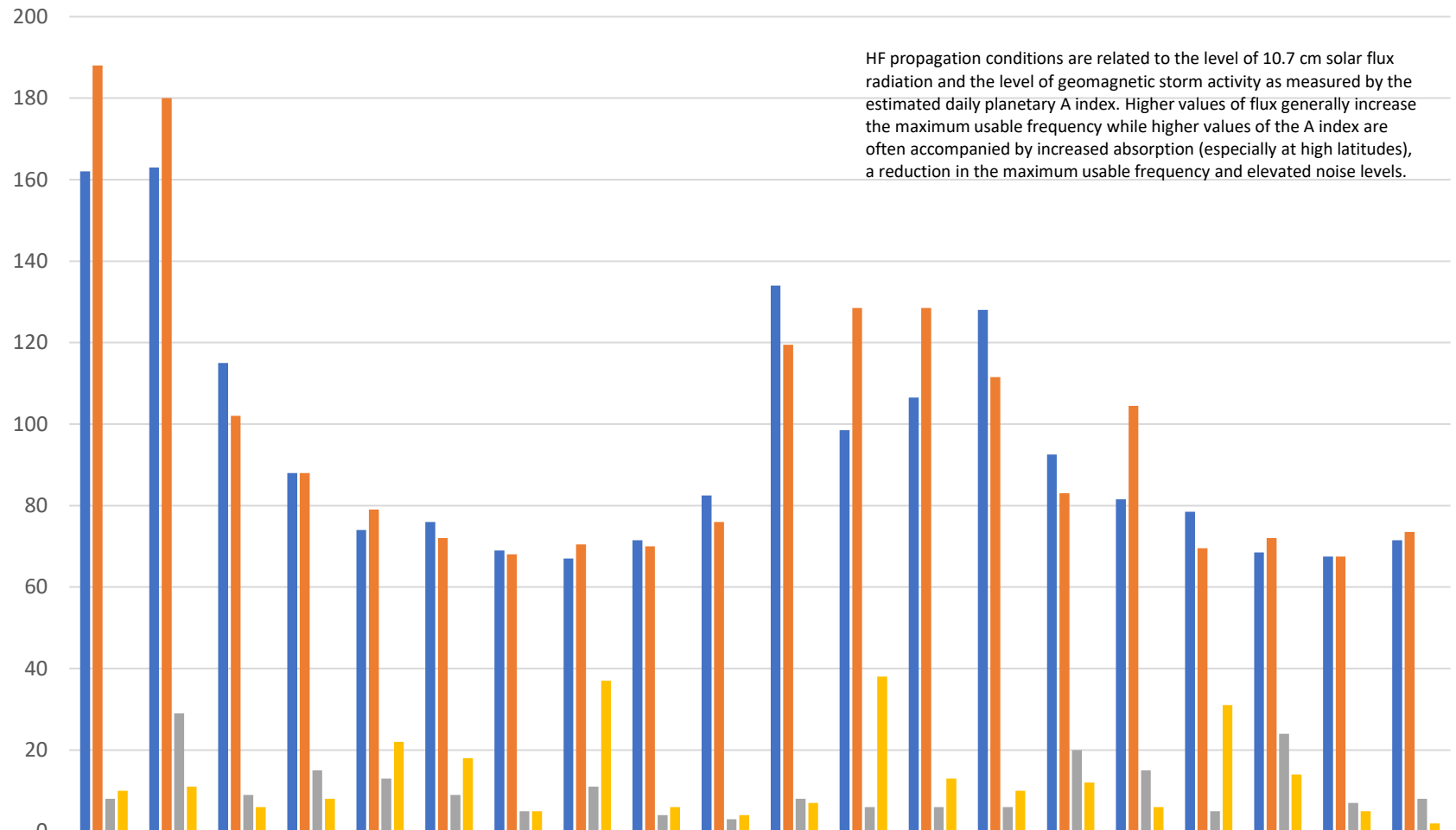
| | 2001 | 2002 | 2003 | 2004 | 2005 | 2006 | 2007 | 2008 | 2009 | 2010 | 2011 | 2012 | 2013 | 2014 | 2015 | 2016 | 2017 | 2018 | 2019 | 2020 |
|----------------------|------|------|------|------|------|------|------|------|------|------|------|------|------|------|------|------|------|------|------|------|
| West Malaysia | 0 | 0 | 0 | 0 | 0 | 0 | 0 | 0 | 0 | 2 | 6 | 3 | 5 | 4 | 8 | 26 | 26 | 30 | 17 | 16 |
| Romania | 3 | 4 | 4 | 4 | 5 | 9 | 5 | 4 | 9 | 11 | 15 | 11 | 12 | 17 | 14 | 9 | 8 | 1 | 3 | 3 |
| Italy | 3 | 0 | 2 | 6 | 6 | 13 | 4 | 9 | 12 | 20 | 19 | 14 | 22 | 20 | 12 | 11 | 13 | 19 | 9 | 15 |
| Ukraine | 11 | 7 | 10 | 14 | 5 | 11 | 11 | 8 | 16 | 17 | 21 | 23 | 17 | 18 | 24 | 11 | 12 | 5 | 6 | 11 |
| Fed. Rep. of Germany | 3 | 8 | 8 | 10 | 3 | 8 | 6 | 11 | 11 | 18 | 28 | 28 | 27 | 28 | 24 | 11 | 21 | 13 | 10 | 18 |
| Poland | 13 | 11 | 14 | 18 | 12 | 12 | 8 | 19 | 26 | 27 | 33 | 42 | 26 | 38 | 26 | 16 | 22 | 9 | 7 | 14 |
| United States | 7 | 8 | 9 | 9 | 9 | 9 | 5 | 8 | 23 | 26 | 52 | 28 | 18 | 30 | 30 | 24 | 21 | 28 | 40 | 29 |
| Asiatic Russia | 13 | 17 | 17 | 34 | 33 | 34 | 24 | 27 | 43 | 42 | 42 | 31 | 32 | 34 | 27 | 19 | 19 | 19 | 13 | 13 |
| European Russia | 21 | 21 | 14 | 34 | 18 | 54 | 30 | 51 | 63 | 45 | 71 | 80 | 53 | 49 | 43 | 46 | 50 | 25 | 20 | 27 |
| Japan | 46 | 50 | 62 | 43 | 34 | 36 | 38 | 47 | 47 | 60 | 70 | 66 | 77 | 76 | 80 | 96 | 82 | 47 | 60 | 98 |

Trend in number of CW logs from top 10 countries outside Oceania



| | 2001 | 2002 | 2003 | 2004 | 2005 | 2006 | 2007 | 2008 | 2009 | 2010 | 2011 | 2012 | 2013 | 2014 | 2015 | 2016 | 2017 | 2018 | 2019 | 2020 |
|------------------------|------|------|------|------|------|------|------|------|------|------|------|------|------|------|------|------|------|------|------|------|
| ■ Lithuania | 2 | 3 | 3 | 4 | 4 | 6 | 5 | 9 | 10 | 10 | 13 | 5 | 12 | 11 | 7 | 7 | 10 | 6 | 6 | 11 |
| ■ Romania | 4 | 4 | 4 | 3 | 7 | 10 | 5 | 7 | 12 | 12 | 14 | 12 | 14 | 14 | 18 | 13 | 10 | 8 | 5 | 13 |
| ■ Czech Republic | 10 | 11 | 8 | 9 | 13 | 11 | 9 | 9 | 16 | 12 | 19 | 12 | 21 | 17 | 15 | 13 | 9 | 10 | 5 | 12 |
| ■ Fed. Rep. of Germany | 12 | 19 | 15 | 13 | 8 | 10 | 11 | 10 | 19 | 22 | 31 | 13 | 38 | 30 | 22 | 24 | 18 | 12 | 19 | 27 |
| ■ Ukraine | 8 | 14 | 11 | 19 | 19 | 13 | 11 | 24 | 34 | 43 | 28 | 31 | 31 | 21 | 27 | 36 | 15 | 21 | 15 | 24 |
| ■ Poland | 15 | 21 | 11 | 20 | 22 | 22 | 18 | 17 | 34 | 38 | 34 | 25 | 32 | 35 | 28 | 23 | 19 | 13 | 12 | 21 |
| ■ United States | 12 | 19 | 17 | 19 | 18 | 15 | 17 | 20 | 26 | 33 | 53 | 27 | 40 | 46 | 47 | 36 | 38 | 49 | 39 | 76 |
| ■ Asiatic Russia | 14 | 17 | 30 | 38 | 40 | 44 | 38 | 47 | 46 | 53 | 65 | 50 | 47 | 43 | 30 | 30 | 28 | 33 | 27 | 31 |
| ■ Japan | 34 | 34 | 32 | 29 | 25 | 38 | 40 | 34 | 36 | 50 | 48 | 86 | 63 | 53 | 63 | 79 | 105 | 88 | 44 | 83 |
| ■ European Russia | 21 | 23 | 26 | 49 | 39 | 51 | 55 | 84 | 100 | 92 | 101 | 91 | 92 | 83 | 64 | 76 | 68 | 59 | 67 | 59 |

Trend of solar and geomagnetic conditions on OCDX contest weekends



| | 2001 | 2002 | 2003 | 2004 | 2005 | 2006 | 2007 | 2008 | 2009 | 2010 | 2011 | 2012 | 2013 | 2014 | 2015 | 2016 | 2017 | 2018 | 2019 | 2020 |
|------------------------|------|------|------|------|------|------|------|------|------|------|-------|-------|-------|-------|------|-------|------|------|------|------|
| ■ PH mean 10.7 cm flux | 162 | 163 | 115 | 88 | 74 | 76 | 69 | 67 | 71.5 | 82.5 | 134 | 98.5 | 106.5 | 128 | 92.5 | 81.5 | 78.5 | 68.5 | 67.5 | 71.5 |
| ■ CW mean 10.7 cm flux | 188 | 180 | 102 | 88 | 79 | 72 | 68 | 70.5 | 70 | 76 | 119.5 | 128.5 | 128.5 | 111.5 | 83 | 104.5 | 69.5 | 72 | 67.5 | 73.5 |
| ■ PH Max Ap Index | 8 | 29 | 9 | 15 | 13 | 9 | 5 | 11 | 4 | 3 | 8 | 6 | 6 | 6 | 20 | 15 | 5 | 24 | 7 | 8 |
| ■ CW Max Ap Index | 10 | 11 | 6 | 8 | 22 | 18 | 5 | 37 | 6 | 4 | 7 | 38 | 13 | 10 | 12 | 6 | 31 | 14 | 5 | 2 |