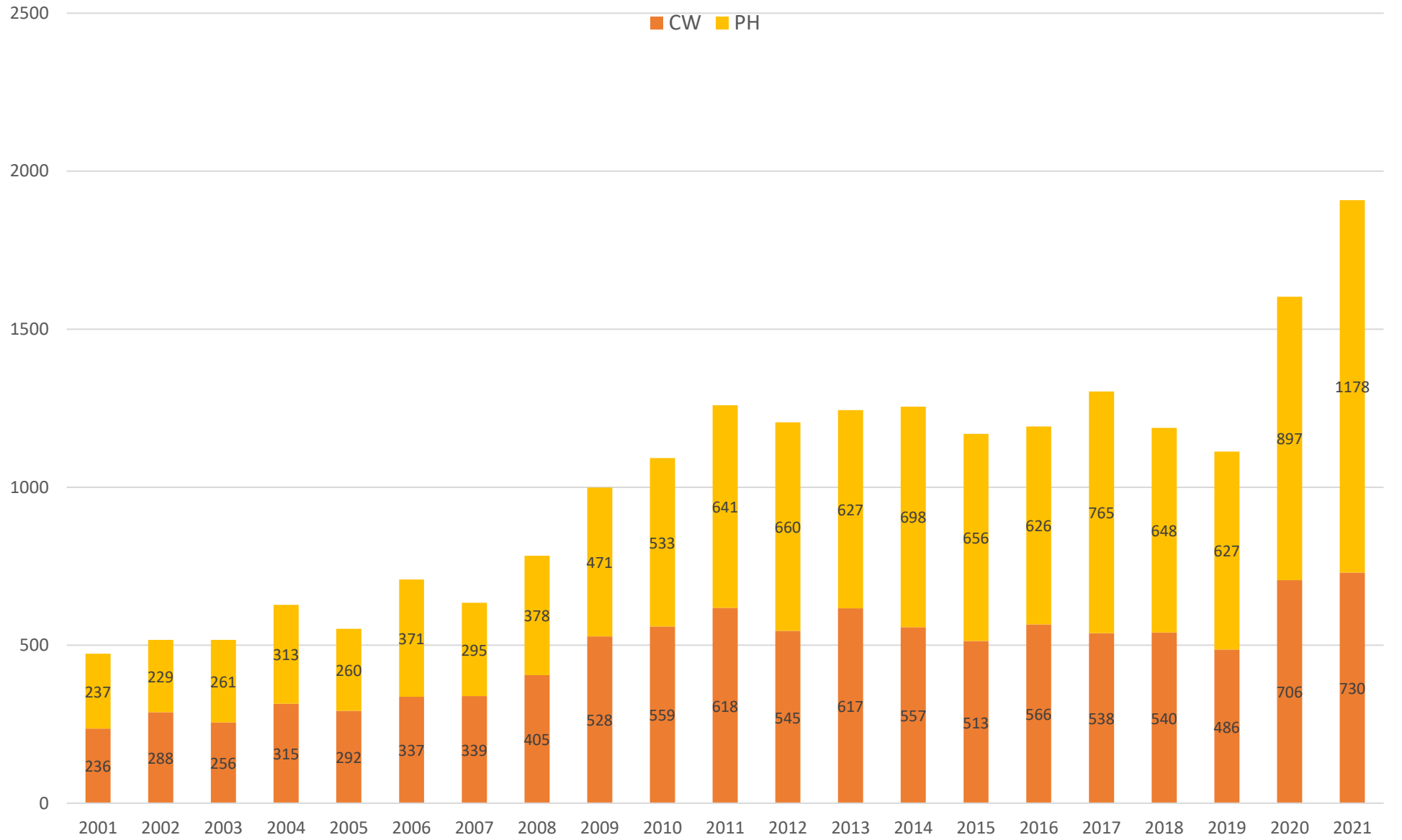
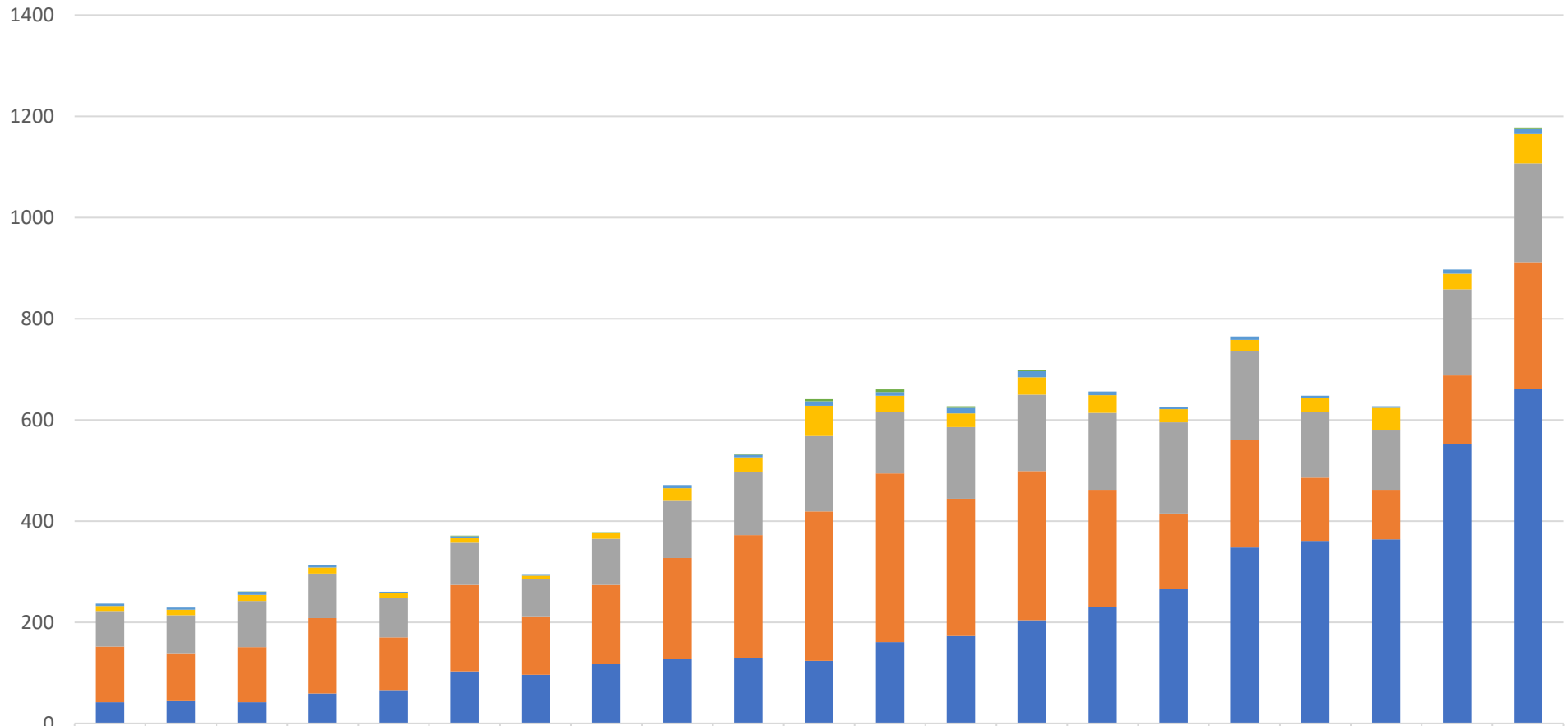


### Trend in number of logs received (including check logs)

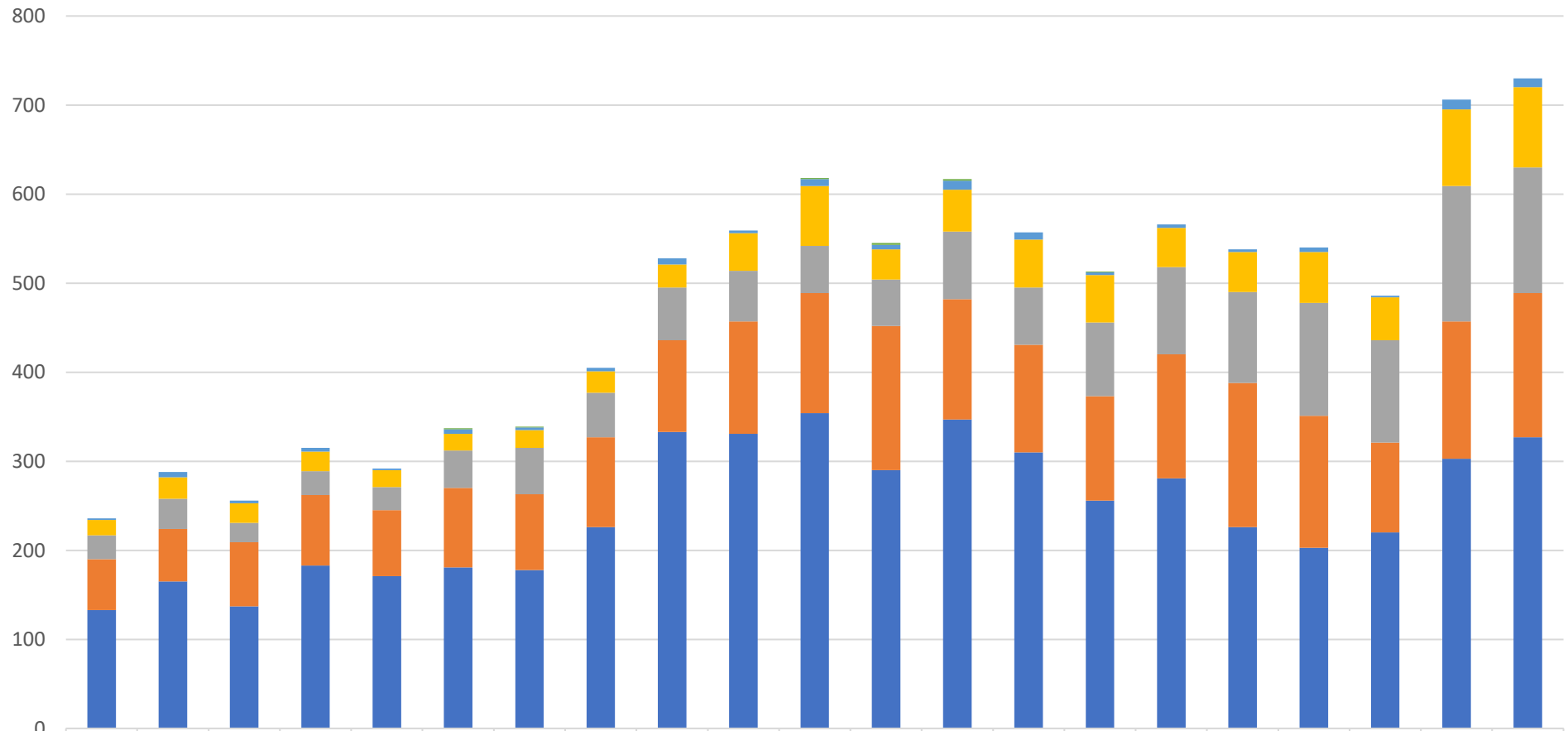


### Trend in number of Phone logs received – grouped by continent



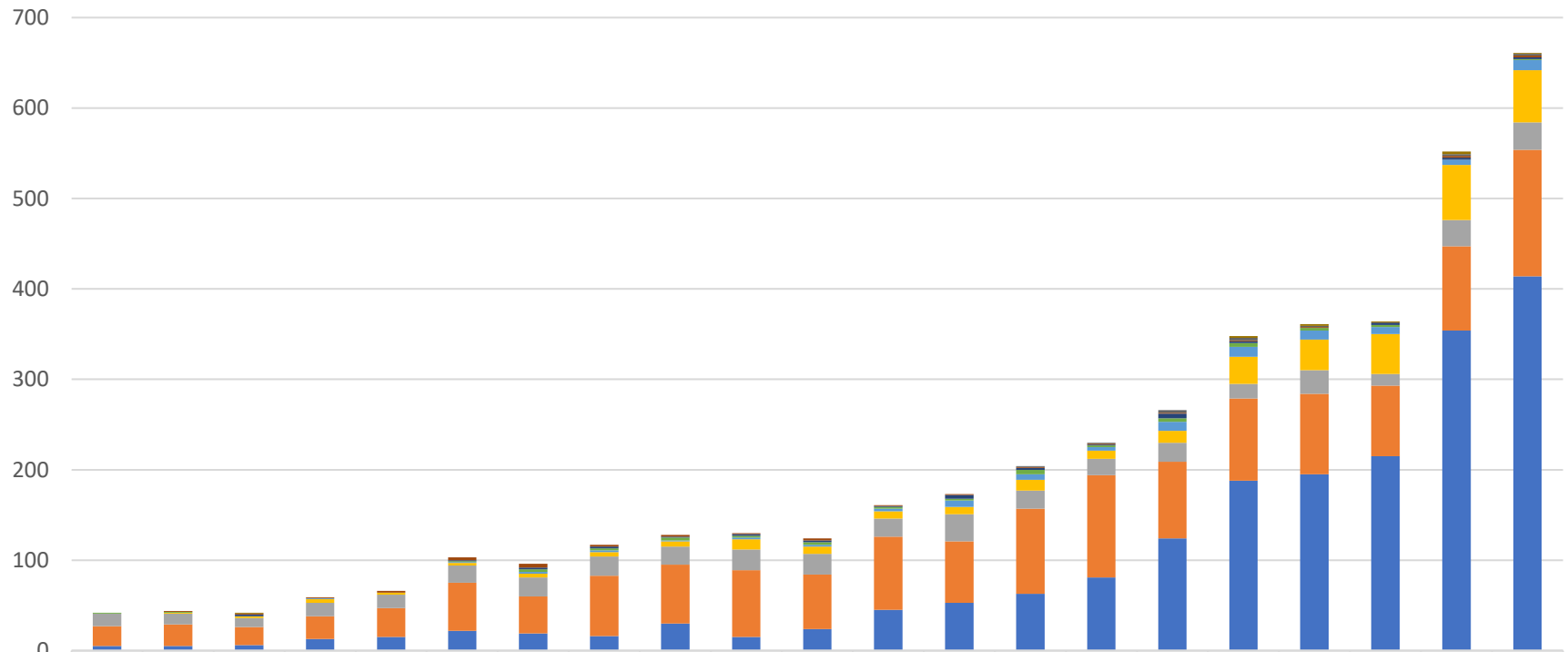
	2001	2002	2003	2004	2005	2006	2007	2008	2009	2010	2011	2012	2013	2014	2015	2016	2017	2018	2019	2020	2021
AF	0	0	1	0	0	1	0	1	0	2	4	5	3	2	0	1	0	0	0	0	3
SA	5	4	6	5	3	4	3	1	6	5	9	7	11	12	7	4	7	4	3	8	10
NA	10	11	12	12	10	9	6	11	25	28	60	33	27	34	35	26	22	29	45	31	58
AS	70	75	91	88	77	83	74	91	113	126	149	121	142	151	152	180	175	129	117	170	195
EU	110	95	109	149	104	171	116	157	199	242	295	333	271	295	232	149	213	125	98	136	251
OC	42	44	42	59	66	103	96	117	128	130	124	161	173	204	230	266	348	361	364	552	661

### Trend in number of CW logs received – grouped by continent



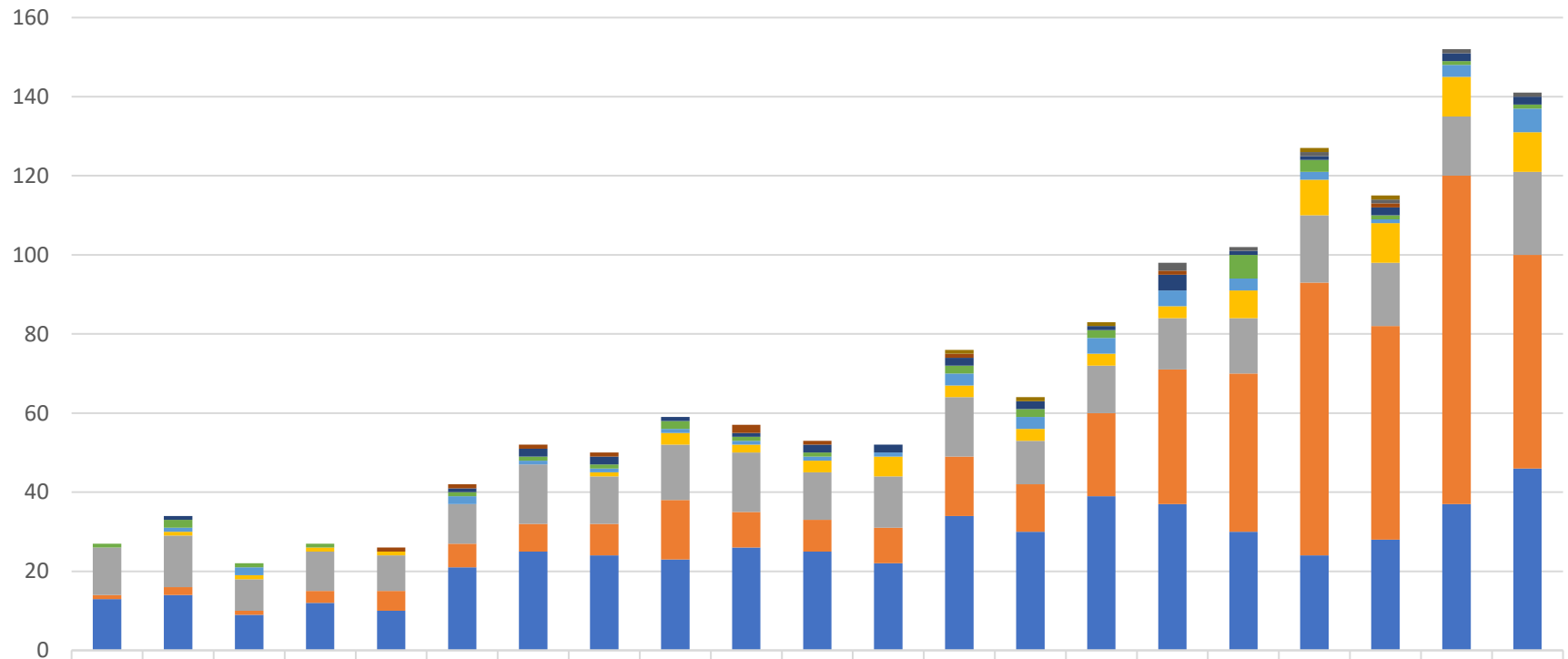
	2001	2002	2003	2004	2005	2006	2007	2008	2009	2010	2011	2012	2013	2014	2015	2016	2017	2018	2019	2020	2021
■ AF	0	0	0	0	0	1	1	0	0	0	1	2	2	0	1	0	0	0	0	0	0
■ SA	2	6	3	4	2	5	3	4	7	3	8	5	10	8	3	4	3	5	2	11	10
■ NA	17	24	22	22	19	19	20	24	26	42	67	34	47	54	53	44	45	57	48	86	90
■ OC	27	34	22	27	26	42	52	50	59	57	53	52	76	64	83	98	102	127	115	152	141
■ AS	57	59	72	79	74	89	85	101	103	126	135	162	135	121	117	139	162	148	101	154	162
■ EU	133	165	137	183	171	181	178	226	333	331	354	290	347	310	256	281	226	203	220	303	327

### Trend in number of Phone logs received from Oceania – grouped by country



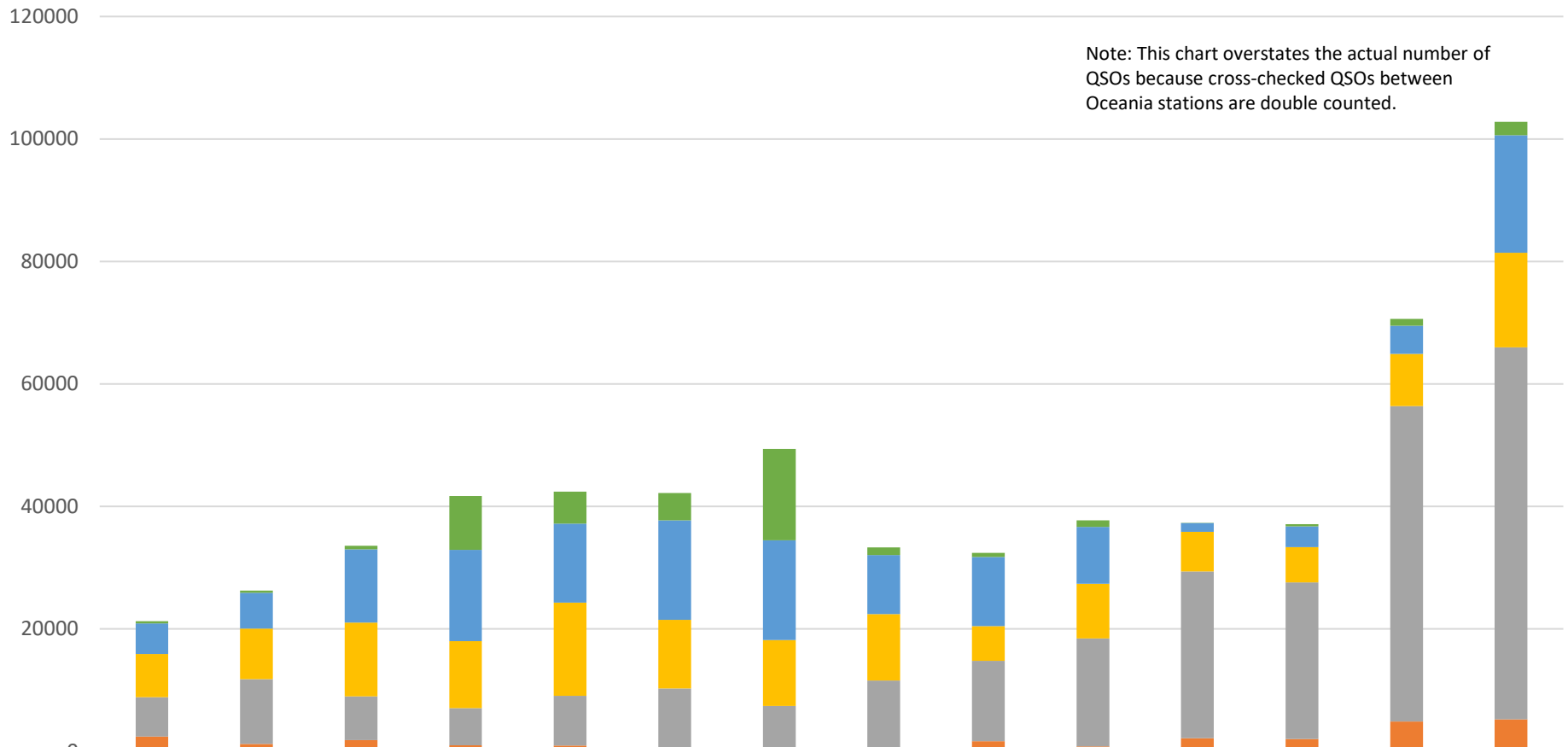
	2001	2002	2003	2004	2005	2006	2007	2008	2009	2010	2011	2012	2013	2014	2015	2016	2017	2018	2019	2020	2021
■ New Caledonia	0	0	1	0	0	0	0	0	0	0	0	0	0	0	0	0	2	2	1	3	1
■ Brunei Darussalam	0	0	0	0	0	0	0	0	0	0	0	0	0	1	1	3	3	1	1	2	2
■ Guam	0	1	1	1	2	3	4	2	2	1	2	1	1	1	1	1	1	1	0	2	2
■ Hawaii	0	0	2	0	0	1	2	2	1	2	2	1	4	2	1	5	2	0	2	2	2
■ Other	1	1	0	0	0	1	3	2	3	2	3	2	2	5	2	4	4	3	2	0	1
■ East Malaysia	0	0	0	1	0	1	2	2	1	2	2	3	7	6	4	10	11	10	8	6	11
■ Philippines	0	1	2	4	2	3	4	5	6	11	8	8	8	12	9	13	30	34	44	61	58
■ New Zealand	14	12	10	15	15	19	21	21	20	23	23	20	30	20	18	21	16	26	13	29	30
■ Australia	22	24	20	25	32	53	41	67	65	74	60	81	68	94	113	85	91	89	78	93	140
■ Indonesia	5	5	6	13	15	22	19	16	30	15	24	45	53	63	81	124	188	195	215	354	414

### Trend in number of CW logs received from Oceania – grouped by country



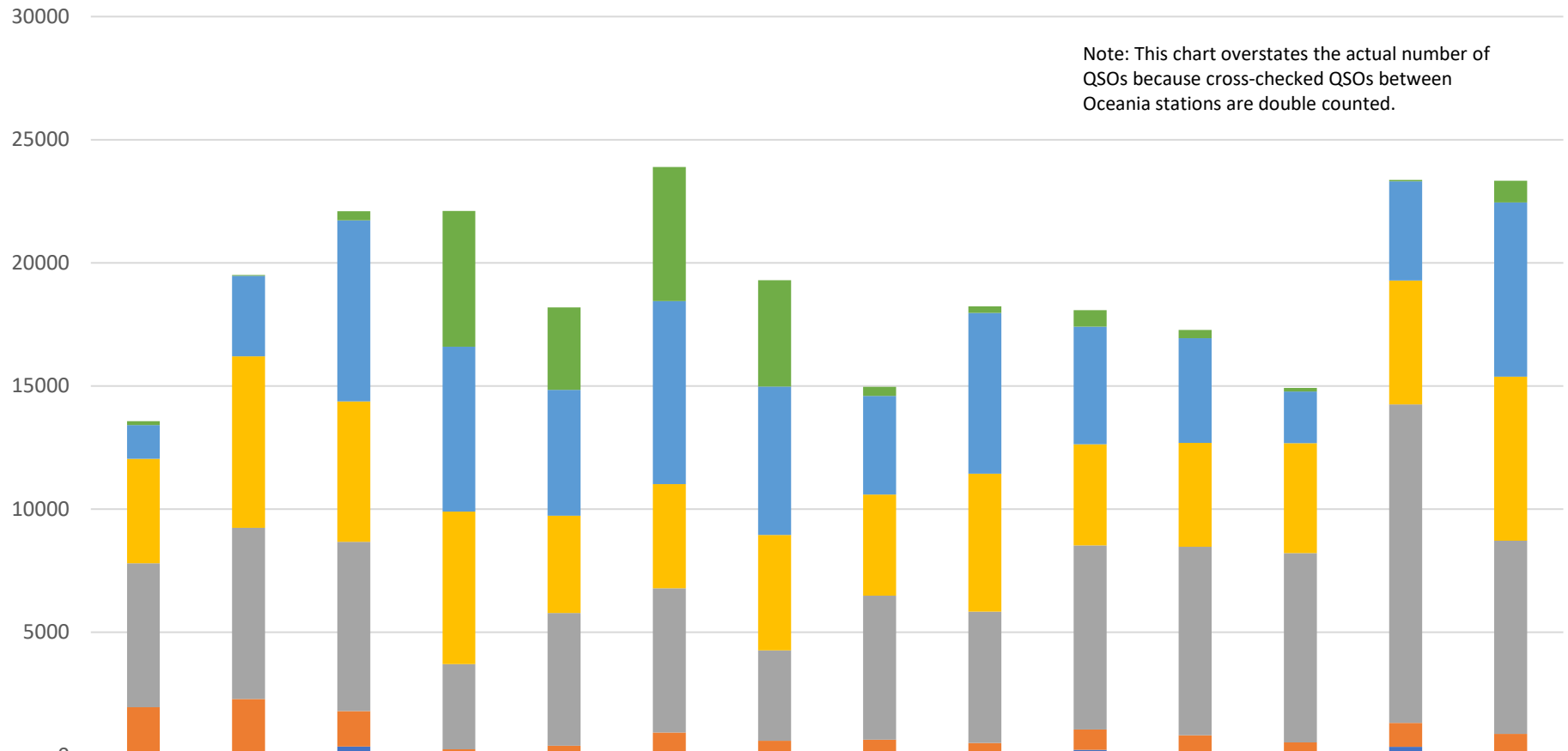
	2001	2002	2003	2004	2005	2006	2007	2008	2009	2010	2011	2012	2013	2014	2015	2016	2017	2018	2019	2020	2021
■ Samoa - Samoa	0	0	0	0	0	0	0	0	0	0	0	0	1	1	1	0	0	1	1	0	0
■ Brunei Darussalam	0	0	0	0	0	0	0	0	0	0	0	0	0	0	0	2	1	1	1	1	1
■ Guam	0	0	0	0	1	1	1	1	0	2	1	0	1	0	0	1	0	0	1	0	0
■ East Malaysia	0	1	0	0	0	1	2	2	1	1	2	2	2	2	1	4	1	1	2	2	2
■ Other	1	2	1	1	0	1	1	1	2	1	1	0	2	2	2	0	6	3	1	1	1
■ Hawaii	0	1	2	0	0	2	1	1	1	1	1	1	3	3	4	4	3	2	1	3	6
■ Philippines	0	1	1	1	1	0	0	1	3	2	3	5	3	3	3	3	7	9	10	10	10
■ New Zealand	12	13	8	10	9	10	15	12	14	15	12	13	15	11	12	13	14	17	16	15	21
■ Indonesia	1	2	1	3	5	6	7	8	15	9	8	9	15	12	21	34	40	69	54	83	54
■ Australia	13	14	9	12	10	21	25	24	23	26	25	22	34	30	39	37	30	24	28	37	46

## Trend in number of Phone QSOs logged by Oceania stations – grouped by band



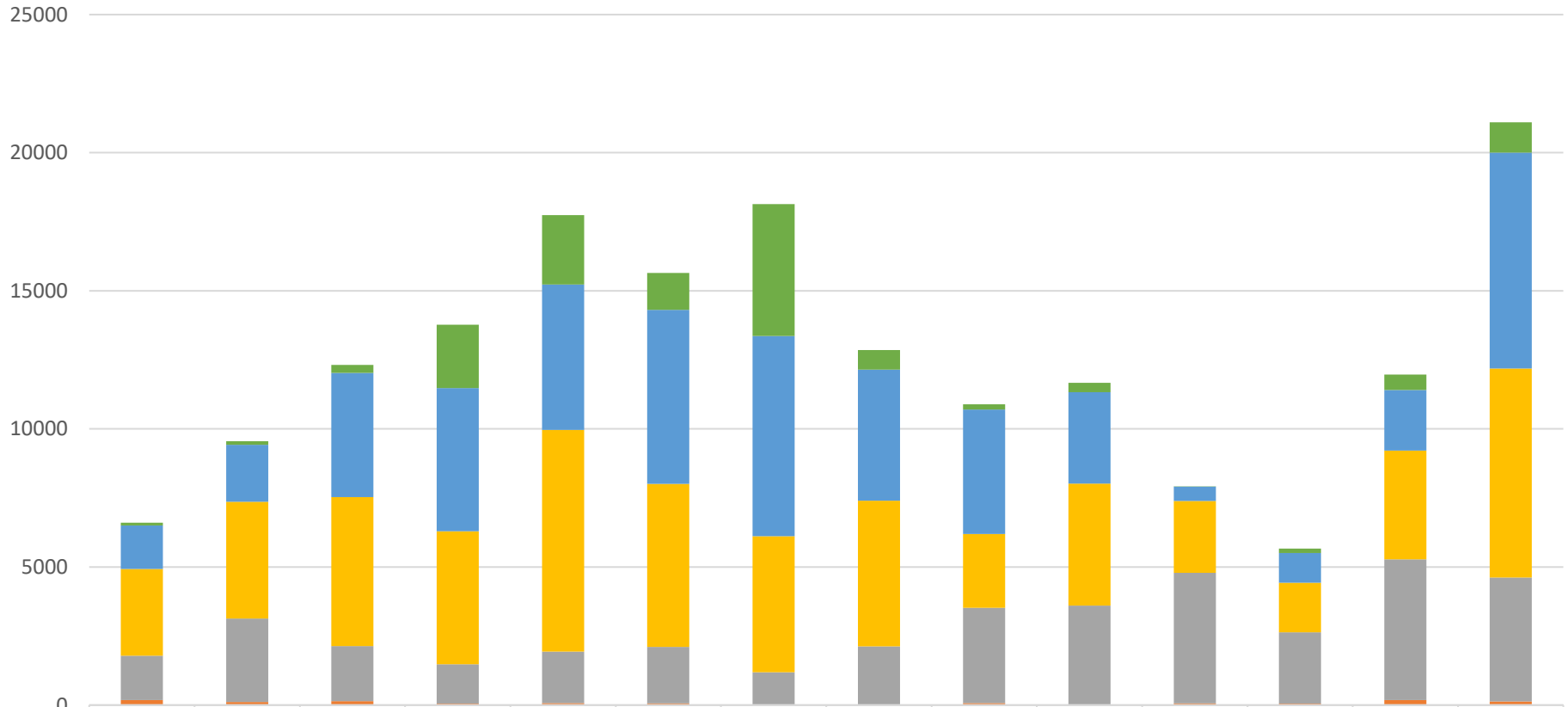
	2008	2009	2010	2011	2012	2013	2014	2015	2016	2017	2018	2019	2020	2021
■ 10M QSOs	356	331	558	8811	5220	4454	14898	1236	653	1042	36	323	1119	2170
■ 15M QSOs	5040	5844	11981	14883	12905	16257	16319	9662	11325	9293	1440	3417	4571	19207
■ 20M QSOs	7029	8267	12042	10945	15193	11213	10742	10828	5656	8910	6464	5755	8536	15440
■ 40M QSOs	6413	10614	7130	6058	8134	9579	6956	11004	13116	17644	27211	25583	51543	60784
■ 80M QSOs	2235	1032	1643	778	896	529	371	461	1358	598	1805	1673	4487	4949
■ 160M QSOs	180	137	185	201	38	128	77	92	282	202	345	318	349	249

## Trend in number of CW QSOs logged by Oceania stations – grouped by band



	2008	2009	2010	2011	2012	2013	2014	2015	2016	2017	2018	2019	2020	2021
10M QSOs	153	37	371	5514	3350	5441	4328	360	272	664	337	147	57	883
15M QSOs	1379	3272	7353	6691	5107	7437	6021	4011	6529	4774	4254	2101	4035	7084
20M QSOs	4242	6958	5707	6198	3945	4235	4687	4109	5601	4109	4216	4464	5023	6658
40M QSOs	5846	6954	6878	3458	5396	5854	3671	5847	5333	7479	7656	7691	12936	7845
80M QSOs	1875	2160	1432	185	367	887	514	596	475	828	803	487	978	822
160M QSOs	75	127	358	57	20	36	76	36	25	218	11	32	340	46

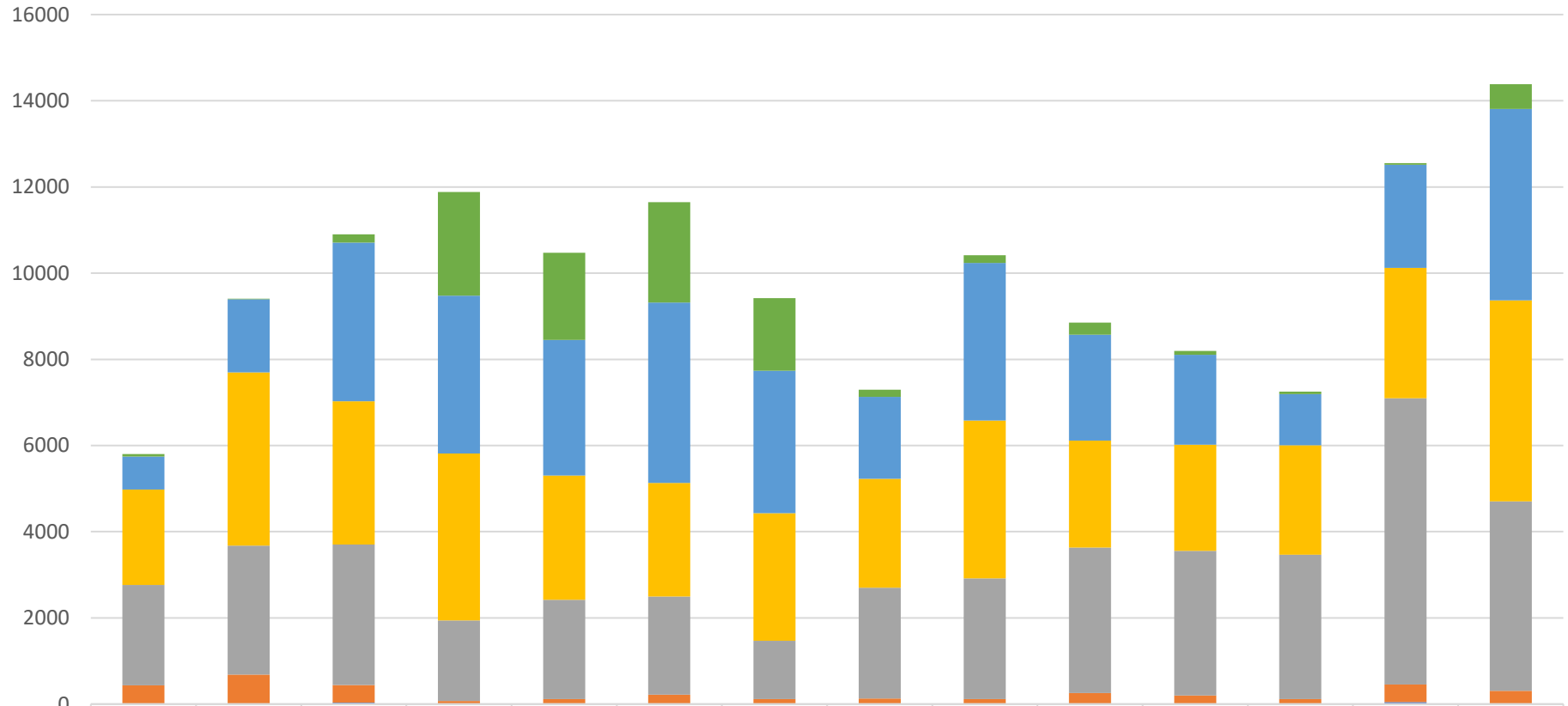
## Trend in number of Phone QSOs logged by non-Oceania stations – grouped by band



	2008	2009	2010	2011	2012	2013	2014	2015	2016	2017	2018	2019	2020	2021
■ 10M QSOs	92	128	287	2297	2511	1337	4767	716	195	342	4	161	566	1095
■ 15M QSOs	1581	2064	4494	5180	5268	6300	7253	4744	4503	3310	521	1073	2192	7813
■ 20M QSOs	3141	4230	5399	4815	8023	5901	4923	5270	2669	4414	2595	1802	3934	7569
■ 40M QSOs	1607	3019	1990	1426	1868	2052	1174	2102	3448	3582	4733	2578	5096	4482
■ 80M QSOs	179	113	143	49	72	56	17	27	76	20	55	54	179	135
■ 160M QSOs	0	1	0	7	0	3	0	0	1	0	4	0	3	1

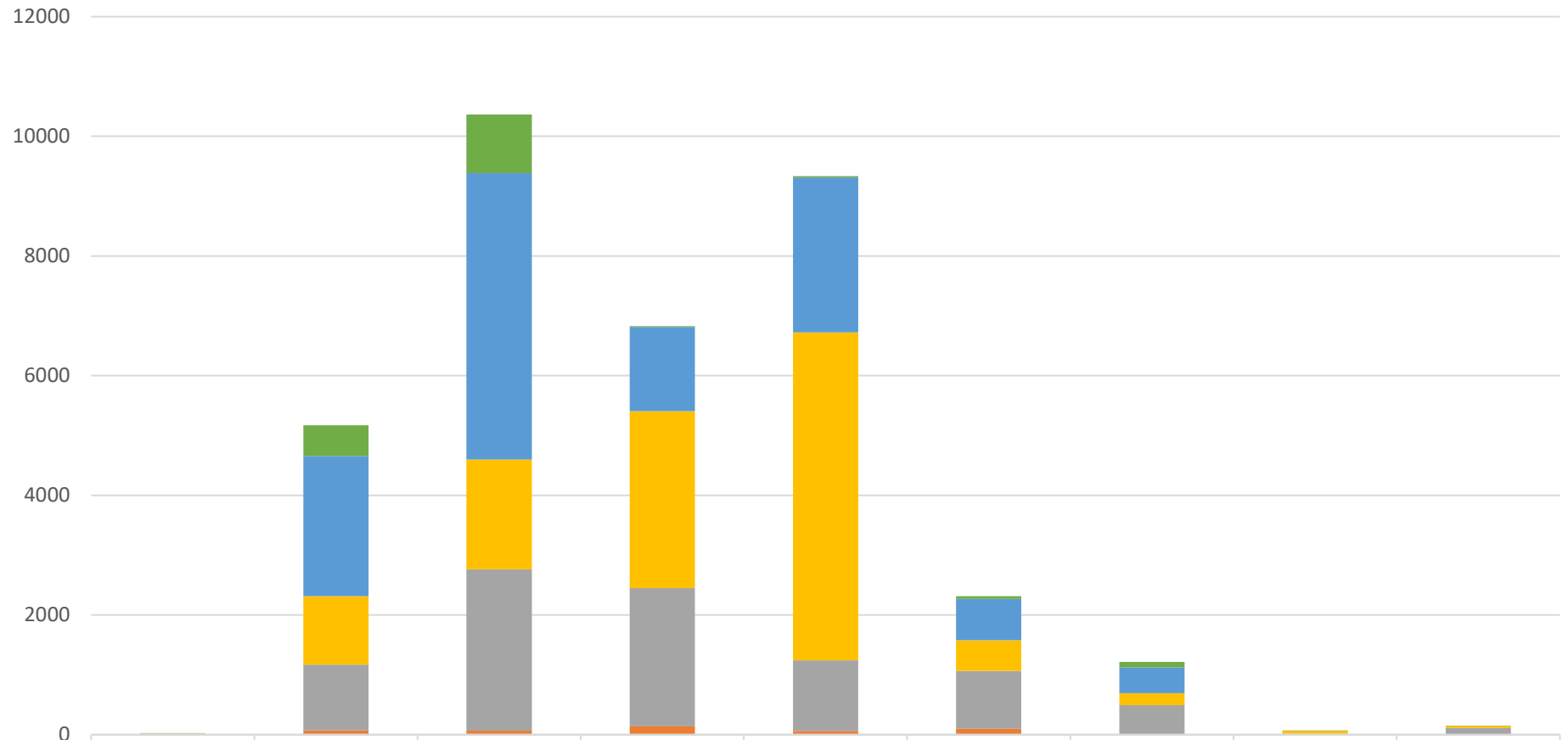


## Trend in number of CW QSOs logged by non-Oceania stations – grouped by band



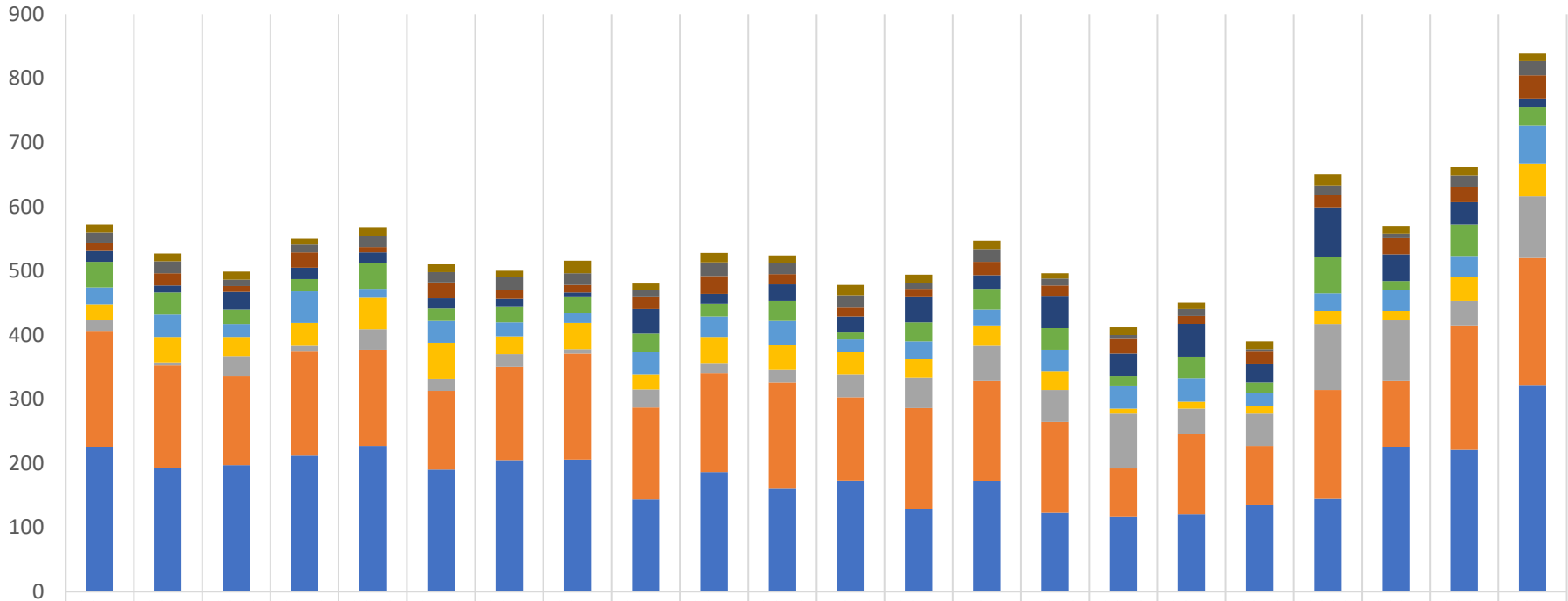
	2008	2009	2010	2011	2012	2013	2014	2015	2016	2017	2018	2019	2020	2021
■ 10M QSOs	57	13	193	2405	2019	2330	1685	161	177	283	90	58	34	572
■ 15M QSOs	764	1694	3684	3660	3147	4182	3309	1902	3654	2457	2081	1181	2391	4445
■ 20M QSOs	2212	4018	3321	3872	2881	2636	2962	2532	3662	2479	2464	2544	3030	4662
■ 40M QSOs	2332	2994	3261	1873	2309	2279	1348	2568	2806	3374	3358	3345	6637	4395
■ 80M QSOs	420	669	406	57	113	212	112	122	109	243	198	116	413	298
■ 160M QSOs	14	17	37	13	1	7	7	8	5	17	2	4	45	11

### QSOs logged by non-Oceania stations in 2021 - grouped by continent and band



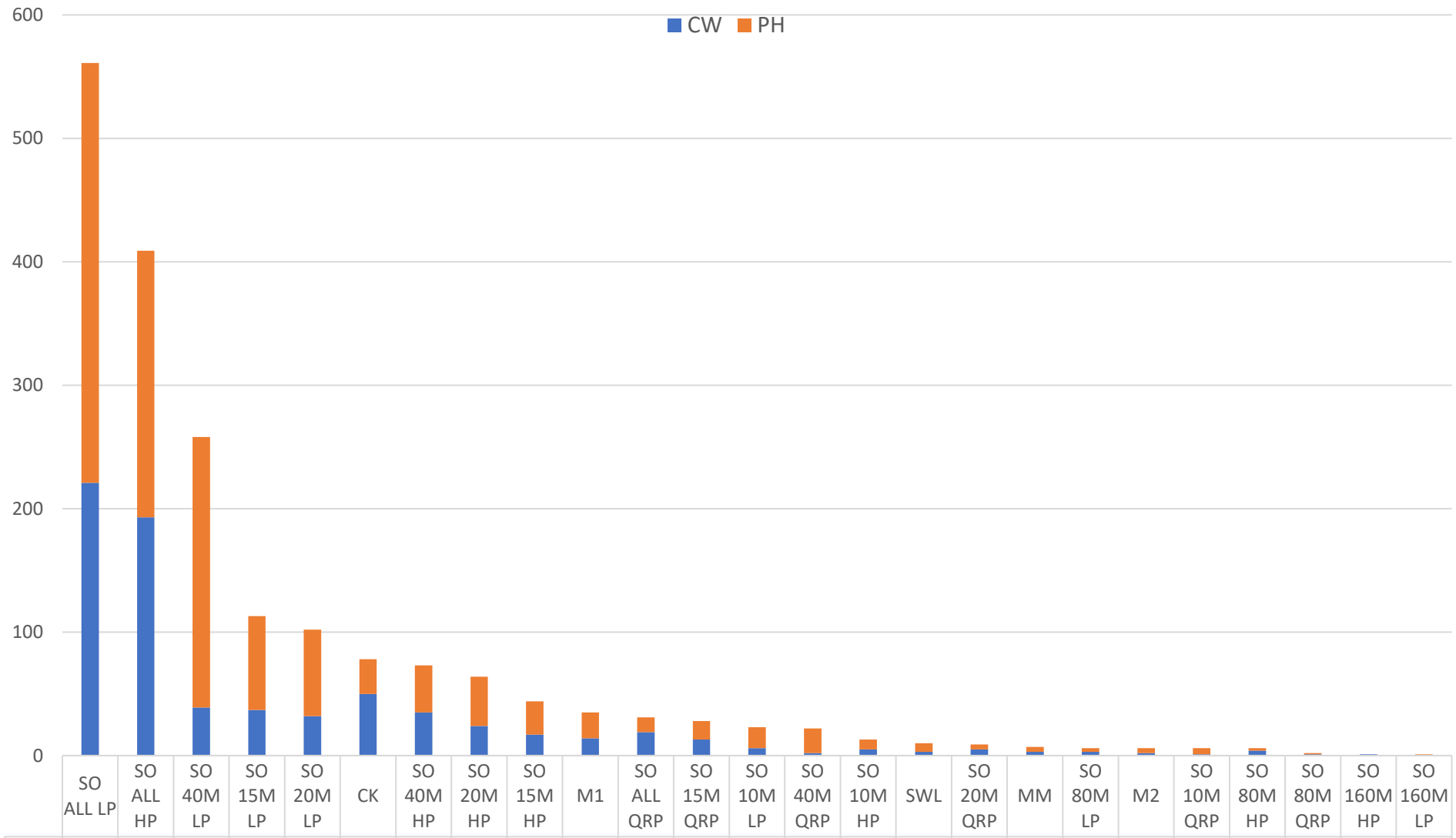
	Africa PH	Asia CW	Asia PH	Europe CW	Europe PH	North America CW	North America PH	South America CW	South America PH
■ 10M QSOs	0	514	982	11	22	47	91	0	0
■ 15M QSOs	5	2340	4785	1411	2588	689	432	5	3
■ 20M QSOs	19	1144	1833	2954	5480	516	202	48	35
■ 40M QSOs	3	1100	2701	2311	1179	967	485	17	114
■ 80M QSOs	0	69	65	135	64	94	6	0	0
■ 160M QSOs	0	3	0	5	0	3	1	0	0

### Trend in number of logs received for top 10 entry categories



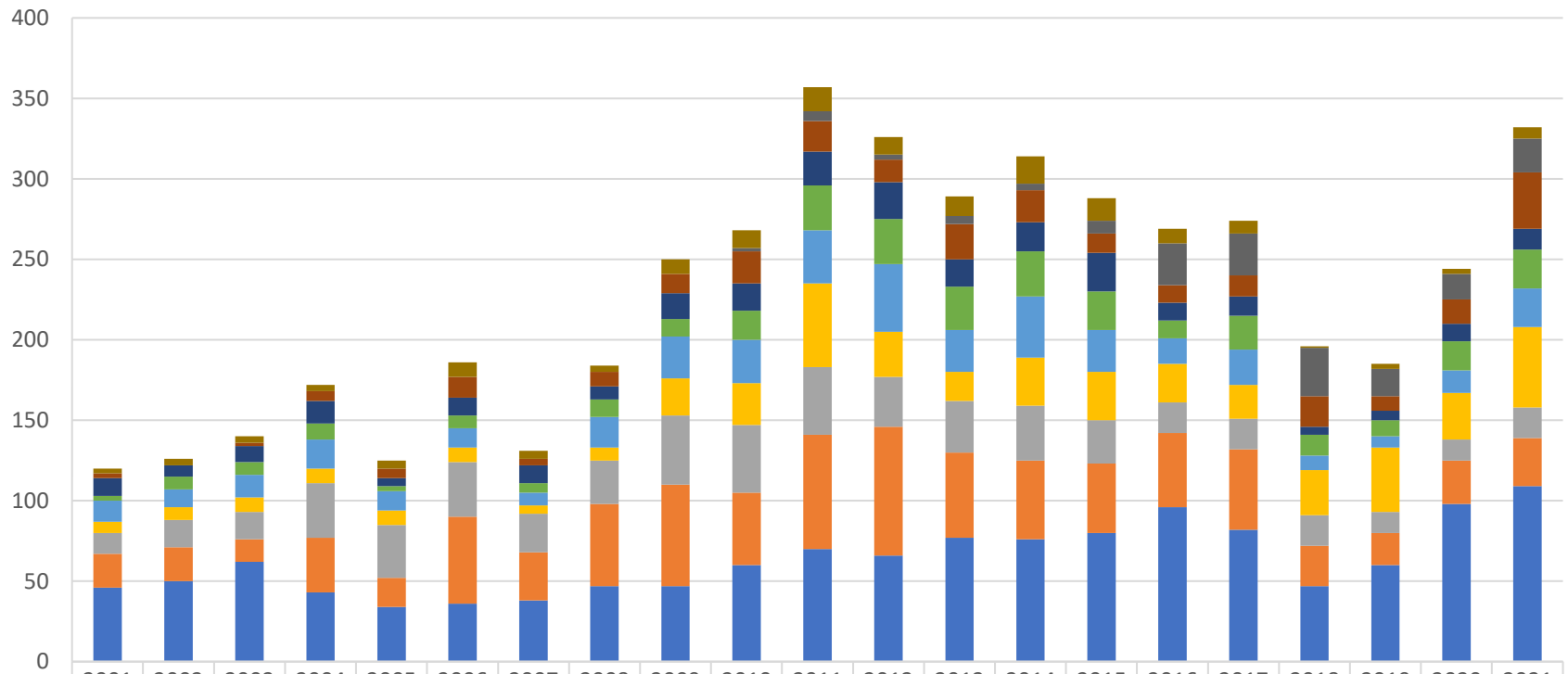
	2011 CW	2011 PH	2012 CW	2012 PH	2013 CW	2013 PH	2014 CW	2014 PH	2015 CW	2015 PH	2016 CW	2016 PH	2017 CW	2017 PH	2018 CW	2018 PH	2019 CW	2019 PH	2020 CW	2020 PH	2021 CW	2021 PH
M1	12	12	13	9	13	12	10	20	10	15	12	16	13	14	8	12	10	12	17	12	14	12
SO 15M HP	17	19	10	12	18	16	20	18	10	21	17	19	9	19	11	6	11	3	15	7	17	22
SO 20M HP	12	19	9	24	8	25	14	12	19	28	16	14	12	21	16	23	13	20	19	25	24	36
SO 40M HP	17	11	27	18	17	15	12	6	39	15	26	25	40	21	50	35	51	29	78	42	35	14
CK	40	34	24	19	40	20	24	26	29	20	31	11	30	32	34	15	33	16	56	14	50	28
SO 20M LP	27	35	19	49	14	34	22	15	35	32	38	20	28	26	33	36	37	21	27	33	32	60
SO 15M LP	24	40	30	36	49	56	28	41	23	41	38	35	28	31	30	8	11	12	22	14	37	51
SO 40M LP	18	5	31	8	32	19	20	7	28	16	20	35	48	55	50	85	39	50	102	95	39	96
SO ALL HP	180	159	139	163	150	123	145	165	143	154	166	130	157	156	141	76	125	92	169	102	193	198
SO ALL LP	225	193	197	212	227	190	205	206	144	186	160	173	129	172	123	116	121	135	145	226	221	322

### Number of logs received in 2021 – grouped by category



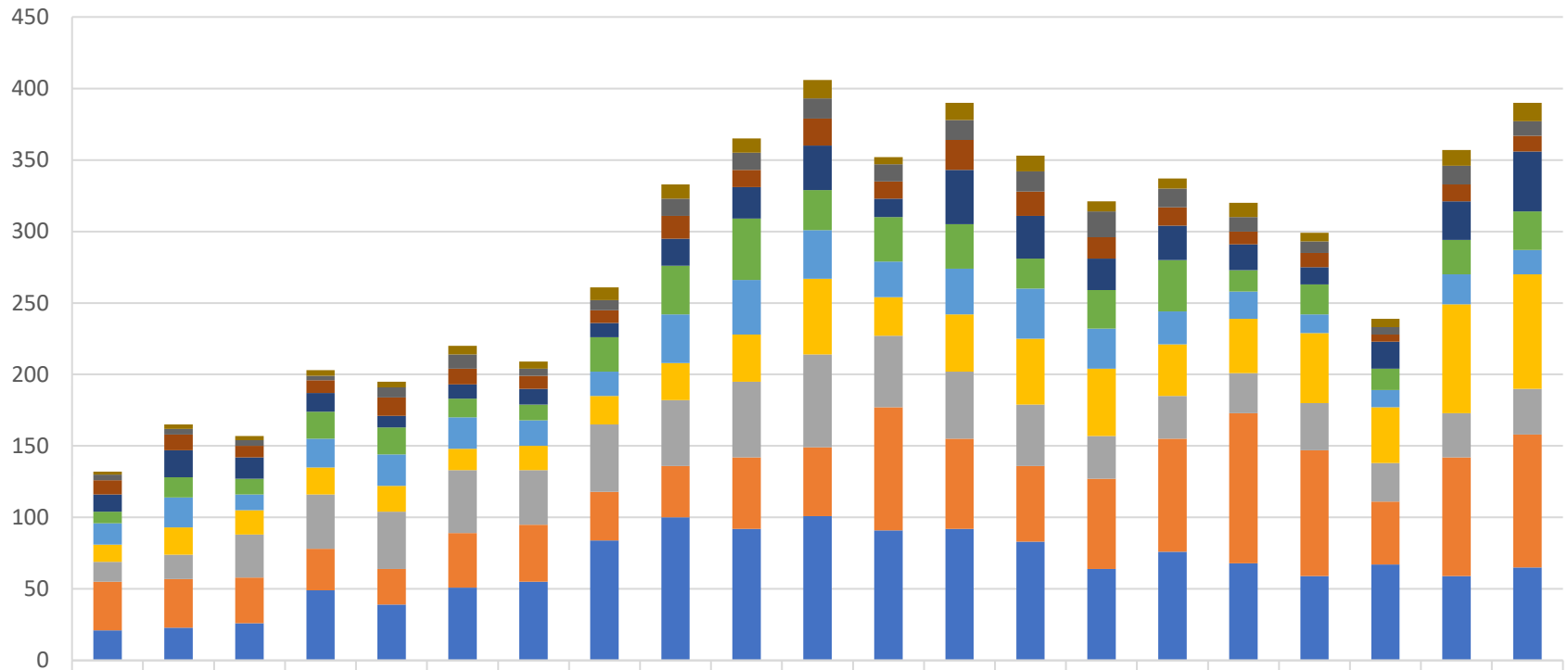
PH	340	216	219	76	70	28	38	40	27	21	12	15	17	20	8	7	4	4	3	4	5	2	1	0	1
CW	221	193	39	37	32	50	35	24	17	14	19	13	6	2	5	3	5	3	3	2	1	4	1	1	0

### Trend in number of Phone logs from top 10 countries outside Oceania



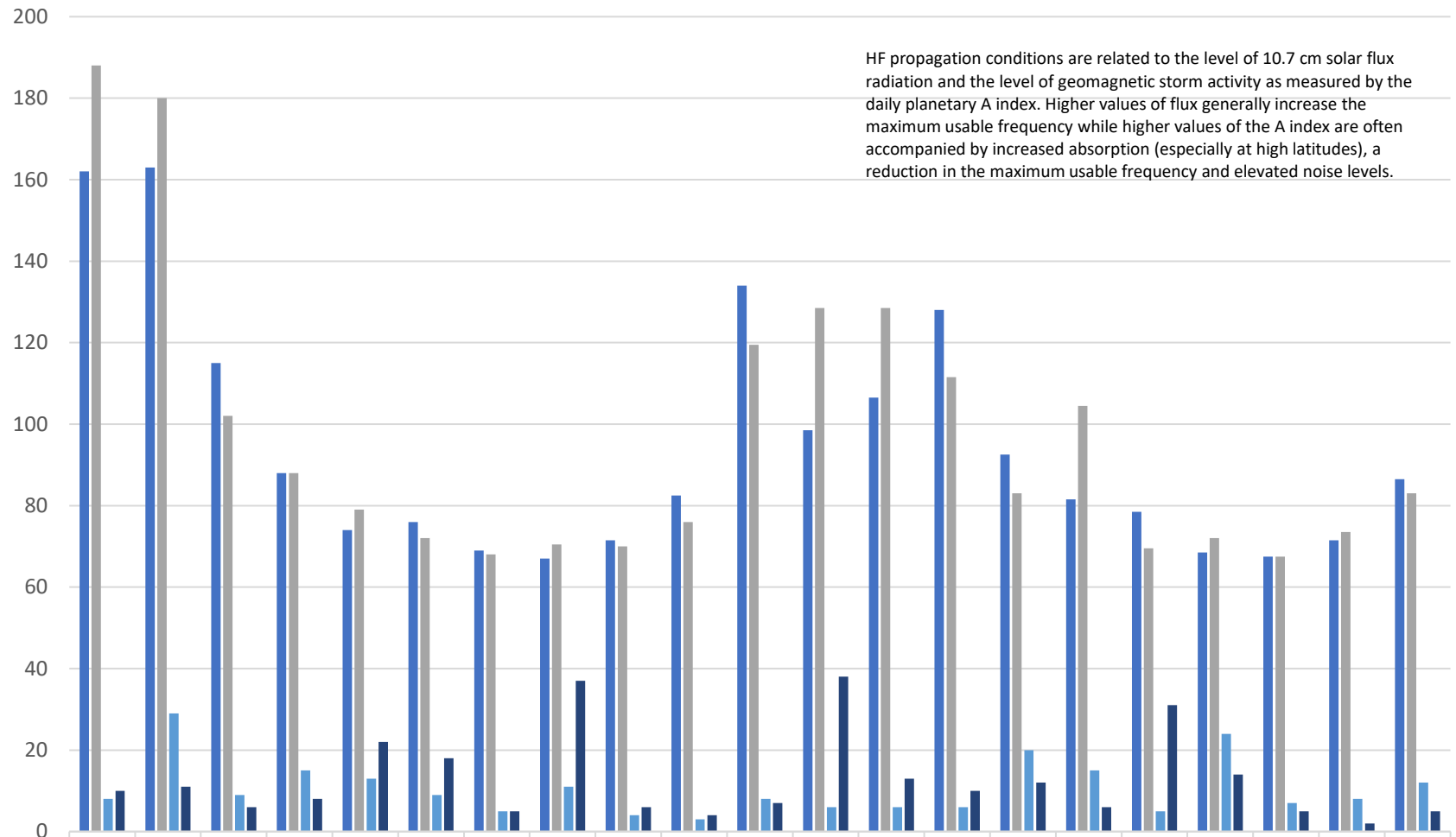
	2001	2002	2003	2004	2005	2006	2007	2008	2009	2010	2011	2012	2013	2014	2015	2016	2017	2018	2019	2020	2021
■ Romania	3	4	4	4	5	9	5	4	9	11	15	11	12	17	14	9	8	1	3	3	7
■ West Malaysia	0	0	0	0	0	0	0	0	0	2	6	3	5	4	8	26	26	30	17	16	21
■ Italy	3	0	2	6	6	13	4	9	12	20	19	14	22	20	12	11	13	19	9	15	35
■ Ukraine	11	7	10	14	5	11	11	8	16	17	21	23	17	18	24	11	12	5	6	11	13
■ Fed. Rep. of Germany	3	8	8	10	3	8	6	11	11	18	28	28	27	28	24	11	21	13	10	18	24
■ Poland	13	11	14	18	12	12	8	19	26	27	33	42	26	38	26	16	22	9	7	14	24
■ United States	7	8	9	9	9	9	5	8	23	26	52	28	18	30	30	24	21	28	40	29	50
■ Asiatic Russia	13	17	17	34	33	34	24	27	43	42	42	31	32	34	27	19	19	19	13	13	19
■ European Russia	21	21	14	34	18	54	30	51	63	45	71	80	53	49	43	46	50	25	20	27	30
■ Japan	46	50	62	43	34	36	38	47	47	60	70	66	77	76	80	96	82	47	60	98	109

### Trend in number of CW logs from top 10 countries outside Oceania



	2001	2002	2003	2004	2005	2006	2007	2008	2009	2010	2011	2012	2013	2014	2015	2016	2017	2018	2019	2020	2021
■ Lithuania	2	3	3	4	4	6	5	9	10	10	13	5	12	11	7	7	10	6	6	11	13
■ Romania	4	4	4	3	7	10	5	7	12	12	14	12	14	14	18	13	10	8	5	13	10
■ Czech Republic	10	11	8	9	13	11	9	9	16	12	19	12	21	17	15	13	9	10	5	12	11
■ Fed. Rep. of Germany	12	19	15	13	8	10	11	10	19	22	31	13	38	30	22	24	18	12	19	27	42
■ Ukraine	8	14	11	19	19	13	11	24	34	43	28	31	31	21	27	36	15	21	15	24	27
■ Poland	15	21	11	20	22	22	18	17	34	38	34	25	32	35	28	23	19	13	12	21	17
■ United States	12	19	17	19	18	15	17	20	26	33	53	27	40	46	47	36	38	49	39	76	80
■ Asiatic Russia	14	17	30	38	40	44	38	47	46	53	65	50	47	43	30	30	28	33	27	31	32
■ Japan	34	34	32	29	25	38	40	34	36	50	48	86	63	53	63	79	105	88	44	83	93
■ European Russia	21	23	26	49	39	51	55	84	100	92	101	91	92	83	64	76	68	59	67	59	65

## Trend of solar and geomagnetic conditions on OCDX contest weekends



HF propagation conditions are related to the level of 10.7 cm solar flux radiation and the level of geomagnetic storm activity as measured by the daily planetary A index. Higher values of flux generally increase the maximum usable frequency while higher values of the A index are often accompanied by increased absorption (especially at high latitudes), a reduction in the maximum usable frequency and elevated noise levels.

	2001	2002	2003	2004	2005	2006	2007	2008	2009	2010	2011	2012	2013	2014	2015	2016	2017	2018	2019	2020	2021
■ PH mean 10.7 cm flux	162	163	115	88	74	76	69	67	71.5	82.5	134	98.5	106.5	128	92.5	81.5	78.5	68.5	67.5	71.5	86.5
■ CW mean 10.7 cm flux	188	180	102	88	79	72	68	70.5	70	76	119.5	128.5	128.5	111.5	83	104.5	69.5	72	67.5	73.5	83
■ PH Max Ap Index	8	29	9	15	13	9	5	11	4	3	8	6	6	6	20	15	5	24	7	8	12
■ CW Max Ap Index	10	11	6	8	22	18	5	37	6	4	7	38	13	10	12	6	31	14	5	2	5